

# XHTONG (INSAFOAM) MECHANICAL COUPLING Catalogue



FM/UL Approval  
ISO9001/ISO14001/ISO18001 CE Approvals



**XHTONG®**



Weifang Xinhuitong Metal Work Co.,Ltd. is a high-tech enterprise that integrates R&D, production, marketing, and engineering service. The company specializes in the R&D and manufacturing of grooved pipe fittings. Its annual production capacity is well above 30,000 tons, which is far ahead of all others in this field.

The company locates in Weifang, Shandong province, a beautiful city known as "the world capital of kites". It is adjacent to the G20 Jinan-Qingdao Highway in the north, and is closed to China National Highway 309 (G309) in the south. The factory and its supporting facilities cover an area of more than 50,000 square meters, enjoying a good geographical location and extremely convenient transportation.

The company's spheroidal graphite cast iron grooved pipe fittings are manufactured in full accordance with the ASTM standards, having successively passed the China national type test and the certification of FM, UL, etc., and are underwritten by PICC property and casualty company limited. The products are widely used in fire fighting, air-conditioning, water supply, sewage, cement, low-pressure steaming, mine piping and ordinary piping delivery, spreading all over the world including Europe and America at present and winning the appreciations from users domestic and overseas.

The company has strong technical strength, and possesses the world's first-class equipment and technology, as well as perfect testing measures. At present, we own the world's most advanced Inductotherm Group frequency converted induction furnace, Denmark DISA automatic production line, Germany EIRICH automatic pouring machine, several vertical CNC machining centers, electrostatic spray production line, and paint dipping production lines, have the standard molding sand laboratory and the physical & chemical laboratory, and are furnished with the advanced testing equipment like the imported spectrometer, metaloscope, tension tester, cupping machine, rubber aging box, etc..

The company has established a perfect quality management system in compliance with the requirements of GB/T19001-2008 / ISO9001:2008 standard. It insists on the concept of "People-oriented, total-staff participation", treats the next working procedure as customer, ensures to provide customers with satisfactory products and services, and maximize the customers' satisfaction. Adhering to the idea of "Survive on quality, develop on credibility" Xinhuitong Metal Work Co.,Ltd. is willing and always ready to provide our clients with top-quality products and best services.

# 产品图例 Product Legend >



<b>XGQT1</b> 刚性卡箍 Rigid Coupling	<b>XGQT1H</b> 高压刚性卡箍 High Pressure Rigid Coupling	<b>XGQT2</b> 挠性卡箍 Flexible Coupling	<b>XGQT2H</b> 高压挠性卡箍 High Pressure Flexible Coupling	<b>XGQT5</b> 斜卡 Angle Holder	<b>XGQT6</b> 异径管卡 Reducing Coupling	<b>XGQT7</b> 肩型管接头 Shouldered Flexible Coupling	<b>XGQT8</b> 环形管接头 Ring Joint coupling
--	---	---	--	------------------------------------	---	---	--



<b>XGQT01</b> 90°弯头 90° Elbow	<b>XGQT01S</b> 丝接异径 90 度弯头 Reducing Elbow Grooved×Grooved	<b>XGQT01G</b> 沟槽异径 90 度弯头 Grooved Elbow Grooved×Threaded	<b>XGQT01D</b> 排水弯头 Drainage Elbow	<b>XGQT01H</b> 异径排水弯头 Reducing Drainage Elbow	<b>XGQT02</b> 45°弯头 45° Elbow	<b>XGQT021</b> 22.5°弯头 22.5° Elbow	<b>XGQT022</b> 11.25°弯头 11.25° Elbow
-------------------------------------	--	--	--	--	-------------------------------------	--	--

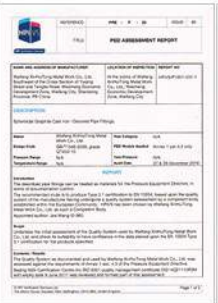


<b>XGQT07</b> 沟槽同心异径管 Grooved Concentric Reducer	<b>XGQT07S</b> 螺纹同心异径管 Threaded Concentric Reducer	<b>XGQT11</b> 沟槽偏心异径管 Grooved Eccentric Reducer	<b>XGQT11S</b> 丝接偏心异径管 Threaded Eccentric Reducer	<b>XGQT4</b> 分体法兰 Grooved Split Flange
---	---	--	--	--

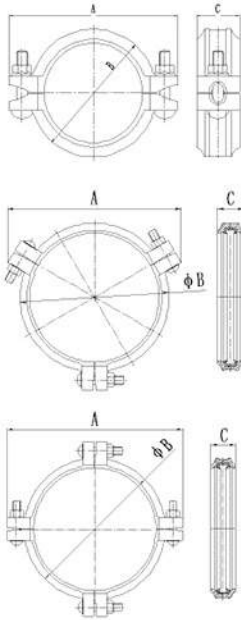


<b>XGQT08</b> 转换法兰 Grooved Adaptor Flange	<b>XGQT08S</b> 丝接法兰 Threaded Flange	<b>XGQT09</b> 盲片 End Cap	<b>XGQT09L</b> 盲片 End Cap	<b>XGQT10</b> 偏心带孔盲片 End Cap with Eccentric Hole	<b>XGQT10C</b> 同心带孔盲片 End Cap with Concentric Hole
---	---	--------------------------------	---------------------------------	---	--





**XGQT1**  
刚性卡箍  
Rigid Coupling

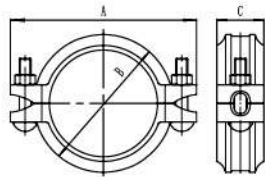


Nominal size 规格	Pipe O.D mm/in	Working Pressure Mpa/psi	Dimension mm/in			Bolt/Nut 螺栓 / 螺母
			A	B	C	
25 1	33.7 1.315	2.07 300	98	58	45	M10*50
32 1¼	42.4 1.66	2.07 300	106	68	45	M10*50
40 1½	48.3 1.9	2.07 300	112	73	45	M10*50
50 2	60.3 2.375	2.07 300	128	86	45	M10*55
65 2½	73 2.875	2.07 300	138	96	45	M10*55
65 2½	76.1 3	2.07 300	139	99	45	M10*55
80 3	88.9 3.5	2.07 300	158	112	45	M10*60
100 4	114.3 4.5	2.07 300	192	143	50	2-M12*70
125 5	139.7 5.5	2.07 300	223	169	50	2-M12*75
125 5	141.3 5.563	2.07 300	223	169	50	2-M12*75
150 6	165.1 6.5	2.07 300	252	198	50	2-M12*75
150 6	168.3 6.625	2.07 300	252	200	50	2-M12*75
200 8	216.3 8.516	2.07 300	326	252	60	2-M16*90
200 8	219.1 8.625	2.07 300	322	254	58	2-M16*90
250 10	267.4 10.528	2.07 300	384	309	62	2-M20*100
250 10	273 10.75	2.07 300	388	314	62	2-M20*110
300 12	318.5 12.539	2.07 300	440	362	62	2-M20*110
300 12	323.9 12.75	2.07 300	443	365	62	2-M20*110
350 14	355.6 14.000	2.07 300	510	415	72	3-M22*140
350 14	377.0 14.850	2.07 300	535	435	72	3-M22*140
400 16	406.4 16.000	2.07 300	575	468	72	3-M22*140
400 16	426.0 16.770	1.60 225	592	490	72	3-M22*140
450 18	457.2 18.000	1.60 225	608	508	78	3-M22*140
450 18	480.0 18.898	1.60 225	630	533	78	3-M22*140
500 20	508.0 20.000	1.60 225	660	563	78	4-M22*140
500 20	530.0 20.866	1.60 225	700	595	78	4-M22*140
600 24	609.6 24.000	1.60 225	772	668	78	4-M24*140
600 24	630 24.80	1.60 225	796	692	78	4-M24*140

### XGQT1H

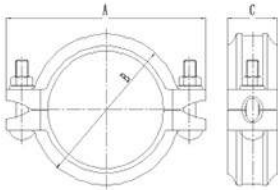
高压刚性卡箍

High Pressure Rigid Coupling



Nominal size 规格	Pipe O.D mm/in 钢管尺寸	Working Pressure Mpa/psi 工作压力	Dimension mm/in			Bolt/Nut 螺栓 / 螺母
			A	B	C	
25 1	33.7 1.315	3.45 500	98	58	45	M10*50
32 1¼	42.4 1.66	3.45 500	106	68	45	M10*50
40 1½	48.3 1.9	3.45 500	112	73	45	M10*50
50 2	60.3 2.375	3.45 500	128	86	45	M10*55
65 2½	73 2.875	3.45 500	138	96	45	M10*55
65 2½	76.1 3	3.45 500	139	99	45	M10*55
80 3	88.9 3.5	3.45 500	158	112	45	M10*60
100 4	114.3 4.5	3.45 500	192	143	50	2-M12*75
125 5	139.7 5.5	3.45 500	223	169	50	2-M12*75
125 5	141.3 5.563	3.45 500	223	169	50	2-M12*75
150 6	165.1 6.5	3.45 500	252	198	50	2-M12*75
150 6	168.3 6.625	3.45 500	252	200	50	2-M12*75
200 8	216.3 8.516	3.45 500	326	252	60	2-M16*90
200 8	219.1 8.625	3.45 500	336	259	60	2-M20*110
250 10	267.4 10.528	3.45 500	384	309	62	2-M20*100
250 10	273 10.75	3.45 500	388	314	62	2-M20*110
300 12	318.5 12.539	3.45 500	440	362	62	2-M20*110
300 12	323.9 12.75	3.45 500	452	370	64	2-M20*130

**XGQT2**  
 挠性卡箍  
 Flexible Coupling



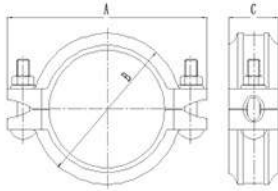
Nominal size	Pipe O.D mm/in	Working Pressure Mpa/psi	Dimension mm/in			Bolt/Nut
			A	B	C	
25 1	33.7 1.315	2.07 300	98	58	45	M10*50
32 1¼	42.4 1.66	2.07 300	106	68	45	M10*50
40 1½	48.3 1.9	2.07 300	112	73	45	M10*50
50 2	60.3 2.375	2.07 300	128	86	45	M10*55
65 2½	73 2.875	2.07 300	138	96	45	M10*55
65 2½	76.1 3	2.07 300	139	99	45	M10*55
80 3	88.9 3.5	2.07 300	158	112	45	M10*60
100 4	114.3 4.5	2.07 300	192	143	50	2-M12*70
125 5	139.7 5.5	2.07 300	223	169	50	2-M12*75
125 5	141.3 5.563	2.07 300	223	169	50	2-M12*75
150 6	165.1 6.5	2.07 300	252	198	50	2-M12*75
150 6	168.3 6.625	2.07 300	252	200	50	2-M12*75
200 8	216.3 8.516	2.07 300	326	252	60	2-M16*90
200 8	219.1 8.625	2.07 300	322	254	58	2-M16*90
250 10	267.4 10.528	2.07 300	384	309	62	2-M20*100
250 10	273 10.75	2.07 300	388	314	62	2-M20*110
300 12	318.5 12.539	2.07 300	440	362	62	2-M20*110
300 12	323.9 12.75	2.07 300	443	365	62	2-M20*110



### XGQT2H

高压挠性卡箍

High Pressure Flexible Coupling

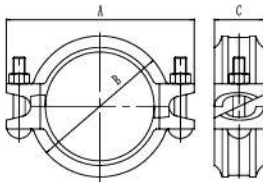


Nominal size 规格	Pipe O.D mm/in 钢管尺寸	Working Pressure Mpa/psi 工作压力	Dimension mm/in			Bolt/Nut 螺栓 / 螺母
			A	B	C	
25 1	33.7 1.315	3.45 500	98	58	45	M10*50
32 1 1/4	42.4 1.66	3.45 500	106	68	45	M10*50
40 1 1/2	48.3 1.9	3.45 500	112	73	45	M10*50
50 2	60.3 2.375	3.45 500	128	86	45	M10*55
65 2 1/2	73 2.875	3.45 500	138	96	45	M10*55
65 2 1/2	76.1 3	3.45 500	139	99	45	M10*55
80 3	88.9 3.5	3.45 500	158	112	45	M10*60
100 4	114.3 4.5	3.45 500	192	143	50	2-M12*75
125 5	139.7 5.5	3.45 500	223	169	50	2-M12*75
125 5	141.3 5.563	3.45 500	223	169	50	2-M12*75
150 6	165.1 6.5	3.45 500	252	198	50	2-M12*75
150 6	168.3 6.625	3.45 500	252	200	50	2-M12*75
200 8	216.3 8.516	3.45 500	326	252	60	2-M16*90
200 8	219.1 8.625	3.45 500	336	259	60	2-M20*110
250 10	267.4 10.528	3.45 500	384	309	62	2-M20*100
250 10	273 10.75	3.45 500	388	314	62	2-M20*110
300 12	318.5 12.539	3.45 500	440	362	62	2-M20*110
300 12	323.9 12.75	3.45 500	452	370	64	2-M20*130

### XGQT5

斜卡

Angle Holder



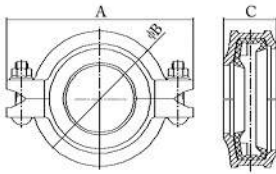
Nominal size 规格	Pipe O.D mm/in 钢管尺寸	Working Pressure Mpa/psi 工作压力	Dimension mm/in			Bolt/Nut 螺栓 / 螺母
			A	B	C	
25 1	33.7 1.315	2.07 300	98	58	45	M10*50
32 1 1/4	42.4 1.66	2.07 300	106	68	45	M10*50
40 1 1/2	48.3 1.9	2.07 300	112	73	45	M10*50
50 2	60.3 2.375	2.07 300	128	86	45	M10*55
65 2 1/2	73 2.875	2.07 300	138	96	45	M10*55
65 2 1/2	76.1 3	2.07 300	139	99	45	M10*55
80 3	88.9 3.5	2.07 300	158	112	45	M10*60
100 4	114.3 4.5	2.07 300	192	143	50	2-M12*70
125 5	139.7 5.5	2.07 300	223	169	50	2-M12*75
125 5	141.3 5.563	2.07 300	223	169	50	2-M12*75
150 6	165.1 6.5	2.07 300	252	198	50	2-M12*75
150 6	168.3 6.625	2.07 300	252	200	50	2-M12*75
200 8	216.3 8.516	2.07 300	326	252	60	2-M16*90
200 8	219.1 8.625	2.07 300	336	259	60	2-M20*110
250 10	267.4 10.528	2.07 300	384	309	62	2-M20*100
250 10	273 10.75	2.07 300	388	314	62	2-M20*110
300 12	318.5 12.539	2.07 300	440	362	62	2-M20*110
300 12	323.9 12.75	2.07 300	452	370	64	2-M20*130

XGOT6

卡

Red

coupling

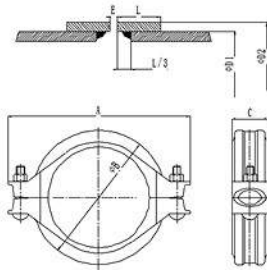


Nominal size	Pipe O.D mm/in	Working Pressure Mpa/psi	Dimension mm/in			Bolt/Nut	Nominal size	Pipe O.D mm/in	Working Pressure Mpa/psi	Dimension mm/in			Bolt/Nut
			A	B	C					A	B	C	
32*25 1 1/4*1	42.4*33.7 1.66*1.327	2.07 300	106	67	45	2-M10*50	100*80 4*3	114.3*88.9 4.5*3.5	2.07 300	194	146	48	2-M12*65
40*25 1 1/2*1	48.3*33.7 1.9*1.327	2.07 300	114	74	45	2-M10*50	125*50 5*2	139.7*60.3 5.5*2.375	2.07 300	222	170	48	2-M12*75
40*32 1 1/2*1 1/4	48.3*42.4 1.9*1.66	2.07 300	114	74	45	2-M10*50	125*65 5*2 1/4	139.7*76.1 5.5*3	2.07 300	222	170	48	2-M12*75
50*25 2*1	60.3*33.7 2.375*1.327	2.07 300	128	86	45	2-M10*50	125*80 5*3	139.7*88.9 5.5*3.5	2.07 300	222	170	48	2-M12*75
50*32 2*1 1/4	60.3*42.4 2.375*1.66	2.07 300	128	86	45	2-M10*50	125*100 5*4	139.7*114.3 5.5*4.5	2.07 300	222	170	50	2-M12*75
60*40 2*1 1/2	60.3*48.3 2.375*1.9	2.07 300	128	86	45	2-M10*50	125*50 5*2	141.3*60.3 5.563*2.375	2.07 300	222	172	48	2-M12*75
65*25 2 1/4*1	73*33.7 2.875*1.327	2.07 300	146	104	45	2-M10*55	125*65 5*2 1/2	141.3*73 5.563*2.875	2.07 300	222	172	48	2-M12*75
65*32 2 1/2*1 1/4	73*42.4 2.875*1.66	2.07 300	146	104	45	2-M10*55	125*80 5*3	141.3*88.9 5.563*3.5	2.07 300	222	172	48	2-M12*75
65*40 2 1/2*1 1/2	73*48.3 2.875*1.9	2.07 300	146	104	45	2-M10*55	125*100 5*4	141.3*114.3 5.563*4.5	2.07 300	222	172	50	2-M12*75
65*50 2 1/2*2	73*60.3 2.875*2.375	2.07 300	146	104	45	2-M10*55	150*65 6*2 1/2	165.1*76.1 6.5*3	2.07 300	252	196	50	2-M16*85
65*25 2 1/2*1	76.1*33.7 3*1.327	2.07 300	146	104	45	2-M10*55	150*80 6*3	165.1*88.9 6.5*3.5	2.07 300	252	196	50	2-M16*85
65*32 2 1/2*1 1/4	76.1*42.4 3*1.66	2.07 300	146	104	45	2-M10*55	150*100 6*4	165.1*114.3 6.5*4.5	2.07 300	252	196	50	2-M16*85
65*40 2 1/2*1 1/2	76.1*48.3 3*1.9	2.07 300	146	104	45	2-M10*55	150*125 6*5	165.1*139.7 6.5*5.5	2.07 300	252	196	50	2-M16*85
65*50 2 1/2*2	76.1*60.3 3*2.375	2.07 300	146	104	45	2-M10*55	150*50 6*2	168.3*60.3 6.625*2.375	2.07 300	262	208	49	2-M16*85
80*25 3*1	88.9*33.7 3.5*1.315	2.07 300	160	116	45	2-M10*55	150*80 6*3	168.3*88.9 6.625*3.5	2.07 300	262	208	49	2-M16*85
80*32 3*1 1/4	88.9*42.4 3.5*1.66	2.07 300	160	116	45	2-M10*55	150*100 6*4	168.3*114.3 6.625*4.5	2.07 300	262	208	50	2-M16*85
80*40 3*1 1/2	88.9*48.3 3.5*1.9	2.07 300	160	116	45	2-M10*55	150*125 6*5	168.3*139.7 6.625*5.5	2.07 300	262	208	50	2-M16*85
80*50 3*2	88.9*60.3 3.5*2.375	2.07 300	160	116	45	2-M10*55	150*125 6*5	168.3*141.3 6.625*5.563	2.07 300	262	208	50	2-M16*85
80*65 3*2 1/2	88.9*73 3.5*2.875	2.07 300	160	116	45	2-M10*55	200*50 8*2	219.1*60.3 8.625*2.375	2.07 300	336	255	58	2-M20*100
80*65 3*2 1/2	88.9*76.1 3.5*3	2.07 300	160	116	45	2-M10*55	200*80 8*3	219.1*88.9 8.625*3.5	2.07 300	336	255	58	2-M20*100
100*25 4*1	114.3*33.7 4.5*1.315	2.07 300	194	146	48	2-M12*65	200*100 8*4	219.1*114.3 8.625*4.5	2.07 300	336	255	60	2-M20*100
100*32 4*1 1/4	114.3*42.4 4.5*1.66	2.07 300	194	146	48	2-M12*65	200*125 8*5	219.1*139.7 8.625*5.5	2.07 300	336	255	60	2-M20*100
100*40 4*1 1/2	114.3*48.3 4.5*1.9	2.07 300	194	146	48	2-M12*65	200*125 8*5	219.1*141.3 8.625*5.563	2.07 300	336	255	60	2-M20*100
100*50 4*2	114.3*60.3 4.5*2.375	2.07 300	194	146	48	2-M12*65	200*150 8*6	219.1*165.1 8.625*6.5	2.07 300	336	255	60	2-M20*100
100*65 4*2 1/2	114.3*73 4.5*2.875	2.07 300	194	146	48	2-M12*65	200*150 8*6	219.1*168.3 8.625*6.625	2.07 300	336	255	60	2-M20*100
100*65 4*2 1/2	114.3*76.1 4.5*3	2.07 300	194	146	48	2-M12*65							

**XGQT7**

肩型管接头

Shouldered Flexible Coupling

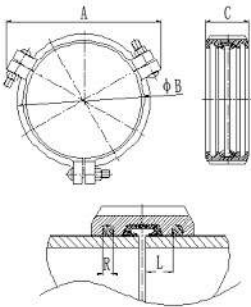


Nominal size	Pipe O.D D1 mm/in	Working Pressure Mpa/psi	Dimension mm/in			Bolt/Nut	Shoulder O.D mm/in D1	Shoulder Length mm/in L	Nominal Gap mm/in E
			A	B	C				
40	48.3	4.14	112	73	45	2-M10*50	52	12.5	3.2
1½	1.9	600					2.047	0.492	0.125
50	60.3	4.14	128	86	45	2-M10*55	66.5	16	3.2
2	2.375	600					2.628	0.625	0.125
65	73	4.14	138	96	45	2-M10*55	80	13	3.2
2½	2.875	600					3.15	0.512	0.125
65	76.1	4.14	139	99	45	2-M10*55	83	13	3.2
2½	3	600					3.268	0.512	0.125
80	88.9	4.14	158	112	45	2-M10*60	97	16	3.2
3	3.5	600					3.819	0.625	0.125
90	101.6	4.14	208	140	46	2-M10*60	108	15.5	3.2
3½	4	600					4.252	0.61	0.125
100	114.3	4.14	192	143	50	2-M12*75	122	17.5	3.2
4	4.5	600					4.803	0.688	0.125
125	139.7	4.14	223	169	50	2-M12*75	148.5	17.5	3.2
5	5.5	600					5.84	0.688	0.125
125	141.3	4.14	223	169	50	2-M12*75	150	17.5	3.2
5	5.563	600					5.91	0.688	0.125
150	165.1	4.14	252	198	50	2-M12*75	174.5	17.5	3.2
6	6.5	600					6.87	0.688	0.125
150	168.3	4.14	252	200	50	2-M12*75	178	17.5	3.2
6	6.625	600					7.007	0.688	0.125
200	216.3	4.14	326	252	60	2-M16*90	229	20.6	3.2
8	8.516	600					9.02	0.813	0.125
200	219.1	4.14	336	259	60	2-M20*110	232	20.6	3.2
8	8.625	600					9.134	0.813	0.125
250	267.4	4.14	384	309	62	2-M20*100	280	20.6	3.2
10	10.528	600					11.02	0.813	0.125
250	273	4.14	388	314	62	2-M20*110	286	20.6	3.2
10	10.75	600					11.26	0.813	0.125
300	318.5	4.14	440	362	62	2-M20*110	331	20.6	3.2
12	12.539	600					13.03	0.813	0.125
300	323.9	4.14	452	370	64	2-M20*130	336.5	20.6	3.2
12	12.75	600					13.248	0.813	0.125

### XGQT8

环形管接头

Ring Joint Coupling

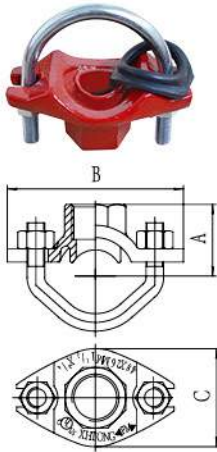


Nominal size	Pipe O.D mm/in	Working Pressure Mpa/psi	Dimension mm/in					Bolt/Nut	Nominal size	Pipe O.D mm/in	Working Pressure Mpa/psi	Dimension mm/in					Bolt/Nut
			A	B	C	L	R					A	B	C	L	R	
200	219.1	2.76	330	256	79	23	6.0	2-M20x120	900	914.4	2.76	1103	1010	200	50	12.7	12-M22x90
8	8.625	400							36	36	400						
250	273.0	2.76	386	312	83	23	6.0	2-M20x120	950	965.2	2.76	1156	1060	200	50	12.7	12-M22x90
10	10.75	400							38	38	400						
300	323.9	2.76	455	374	86	26	8.0	2-M20x120	1000	1016.0	2.76	1229	1135	200	60	15.9	16-M30x130
12	12.75	400							40	40	400						
200	216.3	2.76	327	253	79	23	6.0	2-M20x120	1050	1066.8	2.76	1288	1186	200	60	15.9	16-M30x130
8	8.516	400							42	42	400						
250	267.4	2.76	380	306	83	23	6.0	2-M20x120	1100	1117.6	2.76	1337	1236	200	60	15.9	16-M30x130
10	10.528	400							44	44	400						
300	318.5	2.76	450	369	86	26	8.0	2-M20x120	1200	1219.2	2.76	1420	1338	200	60	15.9	16-M30x130
12	12.539	400							48	48	400						
350	355.6	2.76	493	405	93	26	8.0	2-M22x140	1300	1320.8	2.76	1541	1555	200	60	15.9	16-M30x130
14	14	400							52	52	400						
400	406.4	2.76	547	455	93	26	8.0	2-M22x140	1350	1371.6	2.76	1588	1607	200	60	15.9	16-M30x130
16	16	400							54	54	400						
450	457.2	2.76	614	517	107	30	8.0	2-M24x140	1400	1422.4	2.76	1643	1660	200	60	15.9	16-M30x130
18	18	400							56	56	400						
500	508.1	2.76	660	570	110	30	9.5	2-M24x140	1500	1524.0	2.76	1748	1762	200	60	15.9	16-M30x130
20	20	400							60	60	400						
600	609.6	2.76	762	690	123	30	12.7	4-M24x140	1650	1676.4	2.76	1924	1932	216	60	19.1	16-M30x130
24	24	400							66	66	400						
650	660.4	2.76	832	751	170	50	12.7	4-M24x140	1700	1727.2	2.76	1982	1994	216	60	19.1	16-M30x130
26	26	400							68	68	400						
700	711.2	2.76	901	806	170	50	12.7	12-M22x90	1800	1828.8	2.76	2090	2095	216	60	19.1	16-M30x130
28	28	400							72	72	400						
750	762.0	2.76	955	857	170	50	12.7	12-M22x90	2100	2133.6	2.76	2383	2406	216	60	19.1	16-M30x130
30	30	400							84	84	400						
800	812.8	2.76	1002	908	170	50	12.7	12-M22x90	2400	2438.4	2.76	106.54	106.75	216	60	19.1	16-M30x130
32	32	400							96	96	400	2706	2711				
850	863.4	2.76	1054	959	200	50	12.7	12-M22x90									
34	34	400															

**XGQT3S-U**

U型栓机三

U-bolted Mechanical Tee

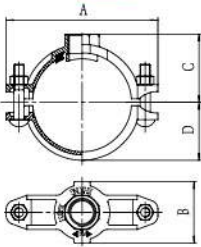


Nominal size	Pipe O.D mm/in	Working Pressure Mpa/psi	Dimension mm/in			Hole Dia mm/in	Bolt size
			A	B	C		
25*15 1*1/2	33.7*21.3 1.327*0.825	2.07 300	39	84	50	25 1	M10*53
25*20 1*3/4	33.7*26.9 1.327*1.05	2.07 300	45	84	50	25 1	M10*53
32*15 1*1/2	42.4*21.3 1.669*0.825	2.07 300	40	90	56	30 1.18	M10*53
32*20 1*3/4	42.4*26.9 1.669*1.05	2.07 300	42	90	56	30 1.18	M10*53
32*25 1*1	42.4*33.7 1.669*1.327	2.07 300	52	90	56	30 1.18	M10*53
40*15 1*1/2	48.3*21.3 1.9*0.825	2.07 300	45	90	56	30 1.18	M10*63
40*20 1*3/4	48.3*26.9 1.9*1.05	2.07 300	45	90	56	30 1.18	M10*63
40*25 1*1	48.3*33.7 1.9*1.327	2.07 300	55	90	56	30 1.18	M10*63
50*15 2*1/2	60.3*21.3 2.375*0.825	2.07 300	50	95	56	30 1.18	M10*76
50*20 2*3/4	60.3*26.9 2.375*1.05	2.07 300	50	95	56	30 1.18	M10*76
50*25 2*1	60.3*33.7 2.375*1.327	2.07 300	60	95	56	30 1.18	M10*76
65*15 2*1/2	73*21.3 2.875*0.825	2.07 300	57	112	56	30 1.18	M10*92
65*20 2*3/4	73*26.9 2.875*1.05	2.07 300	58	112	56	30 1.18	M10*92
65*25 2*1	73*33.7 2.875*1.327	2.07 300	68	112	56	30 1.18	M10*92
65*15 2*1/2	76.1*21.3 3*0.825	2.07 300	57	112	56	30 1.18	M10*92
65*20 2*3/4	76.1*26.9 3*1.05	2.07 300	58	112	56	30 1.18	M10*92
65*25 2*1	76.1*33.7 3*1.327	2.07 300	68	112	56	30 1.18	M10*92

**XGQT3S**

螺纹机械三通

Threaded Out Let  
Mechanical Tee



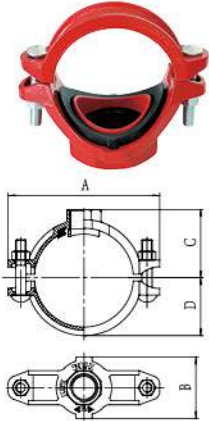
Nominal size	Pipe O.D mm/in	Working Pressure Mpa/psi	Dimension mm/in				Hole Dia mm/in	Bolt Size
规格	钢管尺寸	工作压力	A	B	C	D	开孔尺寸	螺栓规格
50*25 2*1	60.3*33.7 2.375*1.327	2.07 300	118	73	49	38	38	2-M10*60
50*32 2*1½	60.3*42.4 2.375*1.669	2.07 300	118	73	52	38	46	2-M10*60
50*40 2*1	60.3*48.3 2.375*1.9	2.07 300	118	73	62	38	46	2-M10*60
65*15 2½	73*21.3 2.875*0.84	2.07 300	134	56	57	44	30	2-M10*60
65*20 2½	73*26.7 2.875*1.05	2.07 300	134	56	57	44	30	2-M10*60
5*25 2½	73*33.7 2.875*1.315	2.07 300	134	72	57	44	38	2-M10*60
65*32 2½	73*42.4 2.875*1.669	2.07 300	134	82	58	44	46	2-M10*60
65*40 2½	73*48.3 2.875*1.9	2.07 300	134	84	58	44	53	2-M10*60
65*50 2½	73*60.3 2.875*2.375	2.07 300	134	84	74	44	53	2-M10*60
65*15 2½	76.1*21.3 3*0.84	2.07 300	136	72	59	48	30	2-M10*60
65*20 2½	76.1*26.7 3*1.05	2.07 300	136	56	59	48	30	2-M10*60
65*25 2½	76.1*33.7 3*1.327	2.07 300	136	56	59	48	38	2-M10*60
65*32 2½	76.1*42.4 3*1.669	2.07 300	136	82	60	48	46	2-M10*60
65*40 2½	76.1*48.3 3*1.9	2.07 300	136	84	60	48	53	2-M10*60
65*50 2½	76.1*60.3 3*2.375	2.07 300	136	84	76	48	53	2-M10*60
80*15 3	88.9*21.3 3.5*0.84	2.07 300	144	70	68	55	38	2-M10*60
80*20 3	88.9*26.7 3.5*1.05	2.07 300	144	70	68	55	38	2-M10*60
80*25 3	88.9*33.7 3.5*1.327	2.07 300	144	72	66	55	38	2-M10*60
80*32 3	88.9*42.4 3.5*1.669	2.07 300	144	83	67	55	46	2-M10*60
80*40 3	88.9*48.3 3.5*1.9	2.07 300	144	85	67	55	53	2-M10*60
80*50 3	88.9*60.3 3.5*2.375	2.07 300	144	98	69	55	64	2-M10*60
80*65 3	88.9*73 3.5*2.875	2.07 300	144	98	87	55	64	2-M10*60
80*65 3	88.9*76.1 3.5*3	2.07 300	144	98	87	55	64	2-M10*60
100*25 4	108*33.7 4.25*1.327	2.07 300	168	72	76	64	38	2-M12*65

Nominal size	Pipe O.D mm/in	Working Pressure Mpa/psi	Dimension mm/in				Hole Dia mm/in	Bolt Size
规格	钢管尺寸	工作压力	A	B	C	D	开孔尺寸	螺栓规格
100*32 4	108*42.4 4.25*1.669	2.07 300	168	83	76	64	46	2-M12*65
100*40 4	108*48.3 4.25*1.9	2.07 300	168	85	76	64	53	2-M12*65
100*50 4	108*60.3 4.25*2.375	2.07 300	168	95	78	64	64	2-M12*65
100*65 4	108*76.1 4.25*3	2.07 300	168	115	82	64	80	2-M12*65
100*15 4	114.3*21.3 4.5*0.84	2.07 300	178	72	80	68	38	2-M12*65
100*20 4	114.3*26.7 4.5*1.05	2.07 300	178	72	80	68	38	2-M12*65
100*25 4	114.3*33.7 4.5*1.327	2.07 300	178	72	80	68	38	2-M12*65
100*32 4	114.3*42.4 4.5*1.669	2.07 300	178	83	80	68	46	2-M12*65
100*40 4	114.3*48.3 4.5*1.9	2.07 300	178	84	80	68	53	2-M12*65
100*50 4	114.3*60.3 4.5*2.375	2.07 300	178	95	82	68	64	2-M12*65
100*65 4	114.3*73 4.5*2.875	2.07 300	178	114	82	68	80	2-M12*65
100*65 4	114.3*76.1 4.5*3	2.07 300	178	114	82	68	80	2-M12*65
100*80 4	114.3*88.9 4.5*3.5	2.07 300	178	126	95	68	92	2-M12*65
125*25 5	133*33.7 5.25*1.327	2.07 300	198	72	90	79	38	2-M12*75
125*32 5	133*42.4 5.25*1.669	2.07 300	198	83	90	79	46	2-M12*75
125*40 5	133*48.3 5.25*1.9	2.07 300	198	85	90	79	53	2-M12*75
125*50 5	133*60.3 5.25*2.375	2.07 300	198	95	92	79	64	2-M12*75
125*65 5	133*76.1 5.25*3	2.07 300	198	114	92	79	80	2-M12*75
125*80 5	133*88.9 5.25*3.5	2.07 300	198	128	96	79	92	2-M12*75
125*25 5	139.7*33.7 5.5*1.327	2.07 300	206	72	93	81	38	2-M12*75
125*32 5	139.7*42.4 5.5*1.669	2.07 300	206	83	93	81	46	2-M12*75
125*40 5	139.7*48.3 5.5*1.9	2.07 300	206	85	93	81	53	2-M12*75
125*50 5	139.7*60.3 5.5*2.375	2.07 300	206	95	95	81	64	2-M12*75
125*65 5	139.7*73 5.5*2.875	2.07 300	206	114	95	81	80	2-M12*75

## XGQT3S

螺纹机械三通

Threaded Out Let  
Mechanical Tee



Nominal size 规格	Pipe O.D mm/in 钢管尺寸	Working Pressure Mpa/psi 工作压力	Dimension mm/in				Hole Dia mm/in 开孔尺寸	Bolt Size 螺栓规格
			A	B	C	D		
125*65 5*2½	139.7*76.1 5.5*3	2.07 300	206	114	95	81	80	2-M12*75
125*80 5*3	139.7*88.9 5.5*3.5	2.07 300	206	128	95	81	92	2-M12*75
125*100 5*4	139.7*114.3 5.5*4.5	2.07 300	208	157	117	81	114	2-M12*75
125*25 5*1	141.3*33.7 5.563*1.327	2.07 300	206	72	93	82	38	2-M12*75
125*32 5*1¼	141.3*42.4 5.563*1.669	2.07 300	206	83	93	82	46	2-M12*75
125*40 5*1½	141.3*48.3 5.563*1.9	2.07 300	206	85	93	82	53	2-M12*75
125*50 5*2	141.3*60.3 5.563*2.375	2.07 300	206	95	95	82	64	2-M12*75
125*65 5*2½	141.3*73 5.563*2.875	2.07 300	206	114	95	82	80	2-M12*75
125*65 5*2½	141.3*76.1 5.563*3	2.07 300	206	114	95	82	80	2-M12*75
125*80 5*3	141.3*88.9 5.563*3.5	2.07 300	206	128	95	82	92	2-M12*75
125*100 5*4	141.3*114.3 5.563*4.5	2.07 300	208	157	117	82	114	2-M12*75
150*25 6*1	159*33.7 6.25*1.327	2.07 300	228	72	105	90	38	2-M12*75
150*32 6*1¼	159*42.4 6.25*1.669	2.07 300	228	83	105	90	46	2-M12*75
150*40 6*1½	159*48.3 6.25*1.9	2.07 300	228	85	105	90	53	2-M12*75
150*50 6*2	159*60.3 6.25*2.375	2.07 300	228	95	108	90	64	2-M12*75
150*65 6*2½	159*76.1 6.25*3	2.07 300	228	115	108	90	80	2-M12*75
150*80 6*3	159*88.9 6.25*3.5	2.07 300	228	128	108	90	92	2-M12*75
150*100 6*4	159*114.3 6.25*4.5	2.07 300	228	158	117	90	114	2-M12*75
150*15 6*½	165*21.3 6.5*0.84	2.07 300	242	72	105	93	38	2-M14*75
150*20 6*¾	165*26.7 6.5*1.06	2.07 300	242	72	105	93	38	2-M14*75
150*25 6*1	165.1*33.7 6.5*1.327	2.07 300	242	72	105	93	38	2-M14*75
150*32 6*1¼	165.1*42.4 6.5*1.669	2.07 300	242	83	105	93	46	2-M14*75
150*40 6*1½	165.1*48.3 6.5*1.9	2.07 300	242	85	105	93	53	2-M14*75
150*50 6*2	165.1*60.3 6.5*2.375	2.07 300	242	95	108	93	64	2-M14*75
150*65 6*2½	165.1*76.1 6.5*3	2.07 300	242	115	108	93	80	2-M14*75

Nominal size 规格	Pipe O.D mm/in 钢管尺寸	Working Pressure Mpa/psi 工作压力	Dimension mm/in				Hole Dia mm/in 开孔尺寸	Bolt Size 螺栓规格
			A	B	C	D		
150*80 6*3	165.1*88.9 6.5*3.5	2.07 300	242	128	108	93	92	2-M14*75
150*100 6*4	165.1*114.3 6.5*4.5	2.07 300	242	158	112	93	114	2-M14*75
150*15 6*½	168.3*21.3 6.625*0.84	2.07 300	248	72	109	96	38	2-M14*75
150*20 6*¾	168.3*26.7 6.625*1.06	2.07 300	248	72	109	96	38	2-M14*75
150*25 6*1	168.3*33.7 6.625*1.327	2.07 300	248	72	111	96	38	2-M14*75
150*32 6*1¼	168.3*42.4 6.625*1.669	2.07 300	248	83	111	96	46	2-M14*75
150*40 6*1½	168.3*48.3 6.625*1.9	2.07 300	248	85	111	96	53	2-M14*75
150*50 6*2	168.3*60.3 6.625*2.375	2.07 300	248	95	111	96	64	2-M14*75
150*65 6*2½	168.3*73 6.625*2.875	2.07 300	248	115	111	96	80	2-M14*75
150*65 6*2½	168.3*76.1 6.625*3	2.07 300	248	115	111	96	80	2-M14*75
150*80 6*3	168.3*88.9 6.625*3.5	2.07 300	248	128	111	96	92	2-M14*75
150*100 6*4	168.3*114.3 6.625*4.5	2.07 300	248	158	116	96	114	2-M14*75
200*25 8*1	219*33.7 8.625*1.327	2.07 300	298	75	134	122	38	2-M16*85
200*32 8*1¼	219*42.4 8.625*1.669	2.07 300	298	82	137	122	46	2-M16*85
200*40 8*1½	219*48.3 8.625*1.9	2.07 300	298	86	137	122	53	2-M16*85
200*50 8*2	219*60.3 8.625*2.375	2.07 300	298	98	137	122	64	2-M16*85
200*65 8*2½	219*73 8.625*2.875	2.07 300	298	115	137	122	80	2-M16*85
200*65 8*2½	219*76.1 8.625*3	2.07 300	298	115	137	122	80	2-M16*85
200*80 8*3	219*88.9 8.625*3.5	2.07 300	298	128	139	122	92	2-M16*85
200*100 8*4	219*114.3 8.625*4.5	2.07 300	298	156	154	122	114	2-M16*85
250*50 10*2	273*60 10.75*2.375	2.07 300	372	100	168	151	64	2-M20*110
250*65 10*2½	273*73 10.75*2.875	2.07 300	372	115	168	151	80	2-M20*110
250*65 10*2½	273*76 10.75*3	2.07 300	372	115	168	151	80	2-M20*110
250*65 10*3	273*89 10.75*3.5	2.07 300	372	128	169	151	92	2-M20*110
250*65 10*4	273*114 10.75*4.5	2.07 300	372	160	182	151	114	2-M20*110

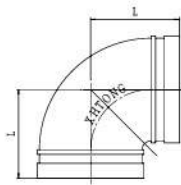




**XGQT01**

90°弯头

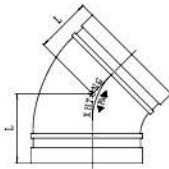
90° Elbow



Nominal size	Pipe O.D mm/in	Working Pressure Mpa/psi	Dimension mm/in		
			L		
25	33.7	2.07		57	57
1	1.315	300			
32	42.4	2.07		60	70
1 1/4	1.66	300			
40	48.3	2.07		60	70
1 1/2	1.9	300			
50	60.3	2.07	65	70	83
2	2.375	300			
65	73	2.07		76	95
2 1/2	2.875	300			
65	76.1	2.07	76	76	95
2 1/2	3	300			
80	88.9	2.07	80	86	108
3	3.5	300			
100	108	2.07	96	102	127
4	4.252	300			
100	114.3	2.07	96	102	127
4	4.5	300			
125	133	2.07	110	122	140
5	5.25	300			
125	139.7	2.07	110	122	140
5	5.5	300			
125	141.3	2.07		122	140
5	5.563	300			
150	159	2.07	122	140	165
6	6.26	300			
150	165.1	2.07	122	140	165
6	6.5	300			
150	168.3	2.07	125	140	165
6	6.625	300			
200	216.3	2.07		175	197
8	8.516	300			
200	219.1	2.07	155	175	197
8	8.625	300			
250	267.4	2.07		215	229
10	10.528	300			
250	273	2.07	190	215	229
10	10.75	300			
300	318.5	2.07		245	254
12	12.539	300			
300	323.9	2.07	220	245	254
12	12.75	300			
350	355.6	2.07			279
14	14.000	300			
350	377.0	2.07			279
14	14.84	300			
400	406.4	2.07			305
16	16.000	300			
400	426.0	2.07			305
16	16.77	300			
450	457.2	2.07			394
18	18.000	300			
450	480.0	2.07			335
18	18.90	300			
500	508.0	2.07			438
20	20.000	300			
600	609.6	2.07			508
24	24.000	300			
600	630.0	2.07			508
24	24.80	300			

**XGQT02**

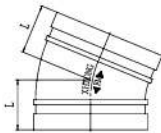
45°弯头  
45° Elbow



Nominal size	Pipe O.D mm/in	Working Pressure Mpa/psi	Dimension mm/in	
规格	钢管尺寸	工作压力	L	
25	33.7	2.07		45
1	1.315	300		
32	42.4	2.07		45
1¼	1.66	300		
40	48.3	2.07		45
1½	1.9	300		
50	60.3	2.07		51
2	2.375	300		
65	73	2.07	55	57
2½	2.875	300		
65	76.1	2.07	55	57
2½	3	300		
80	88.9	2.07	55	64
3	3.5	300		
100	108	2.07	60	76
4	4.252	300		
100	114.3	2.07	60	76
4	4.5	300		
125	133	2.07	70	83
5	5.25	300		
125	139.7	2.07	70	83
5	5.5	300		
125	141.3	2.07	70	83
5	5.563	300		
150	159	2.07	70	89
6	6.26	300		
150	165.1	2.07	70	89
6	6.5	300		
150	168.3	2.07	70	89
6	6.625	300		
200	216.3	2.07		108
8	8.516	300		
200	219.1	2.07	90	108
8	8.625	300		
250	267.4	2.07		121
10	10.528	300		
250	273	2.07	112	121
10	10.75	300		
300	318.5	2.07		133
12	12.539	300		
300	323.9	2.07	120	133
12	12.75	300		
350	355.6	2.07		122
14	14.000	300		
350	377.0	2.07		122
14	14.84	300		
400	406.4	2.07		184
16	16.000	300		
400	426.0	2.07		184
16	16.77	300		
450	457.2	2.07		203
18	18.000	300		
450	480.0	2.07		203
18	18.90	300		
500	508.0	2.07		229
20	20.000	300		
600	609.6	2.07		280
24	24.000	300		

**XGQT021**

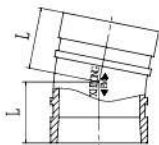
22.5°弯头  
22.5° Elbow



Nominal size	Pipe O.D mm/in	Working Pressure Mpa/psi	Dimension mm/in
规格	钢管尺寸	工作压力	L
25	33.7	2.07	40
1	1.315	300	
32	42.4	2.07	45
1¼	1.66	300	
40	48.3	2.07	45
1½	1.9	300	
50	60.3	2.07	45
2	2.375	300	
65	73	2.07	48
2½	2.875	300	
65	76.1	2.07	48
2½	3	300	
80	88.9	2.07	50
3	3.5	300	
100	108	2.07	50
4	4.252	300	
100	114.3	2.07	73
4	4.5	300	
125	133	2.07	60
5	5.25	300	
125	139.7	2.07	60
5	5.5	300	
125	141.3	2.07	60
5	5.563	300	
150	159	2.07	60
6	6.26	300	
150	165.1	2.07	60
6	6.5	300	
150	168.3	2.07	79
6	6.625	300	
200	219.1	2.07	80
8	8.625	300	
250	273	2.07	90
10	10.75	300	
300	323.9	2.07	102
12	12.75	300	

**XGQT022**

11.25°弯头  
11.25° Elbow



Nominal size	Pipe O.D mm/in	Working Pressure Mpa/psi	Dimension mm/in
规格	钢管尺寸	工作压力	L
25	33.7	2.07	40
1	1.315	300	
32	42.4	2.07	40
1¼	1.66	300	
40	48.3	2.07	35
1½	1.9	300	
50	60.3	2.07	35
2	2.375	300	
65	73	2.07	38
2½	2.875	300	
65	76.1	2.07	38
2½	3	300	
80	88.9	2.07	38
3	3.5	300	
100	108	2.07	45
4	4.252	300	
100	114.3	2.07	45
4	4.5	300	
125	139.7	2.07	45
5	5.5	300	
125	141.3	2.07	45
5	5.563	300	
150	159	2.07	50
6	6.26	300	
150	165.1	2.07	50
6	6.5	300	
150	168.3	2.07	51
6	6.625	300	
200	219.1	2.07	55
8	8.625	300	
250	273	2.07	55
10	10.75	300	
300	323.9	2.07	57
12	12.75	300	

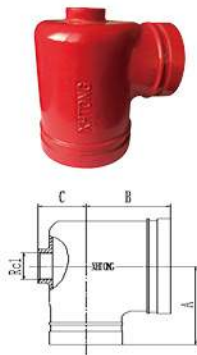
**XGQT01D**  
排水弯头  
Drainage Elbow



BSPT and NPT threads are also available, please specify when order.

Nominal size 规格	Pipe O.D mm/in 钢管尺寸	Working Pressure Mpa/psi 工作压力	Dimension mm/in		
			L	M	N
50*25 2*1	60.3*33.7 2.375*1.327	2.07 300	70	70	36
65*25 2½*1	73*33.7 2.875*1.327	2.07 300	95	70	44
65*25 2½*1	76.1*33.7 3*1.327	2.07 300	95	70	44
80*25 3*1	88.9*33.7 3.5*1.327	2.07 300	108	70	52
100*25 4*1	114.3*33.7 4.5*1.327	2.07 300	127	70	64
125*25 5*1	139.7*33.7 5.5*1.327	2.07 300	140	70	78
125*25 5*1	141.3*33.7 5.563*1.327	2.07 300	140	70	78
150*25 6*1	165.1*33.7 6.5*1.327	2.07 300	165	70	91
150*25 6*1	168.3*33.7 6.625*1.327	2.07 300	165	70	91
200*25 8*1	219.1*33.7 8.625*1.327	2.07 300	197	70	121

**XGQT01H**  
排水弯头  
Reducing  
Drainage Elbow

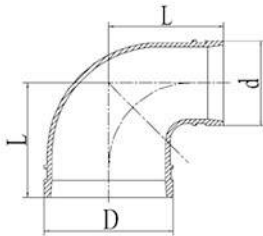


Pipe O.D mm/in 钢管尺寸	Working Pressure MPa/psi 工作压力	Dimension mm		
		A	B	C
114.3*88.9*33.7 4.5*3.5*1.327	2.07 300	95	102	58
165.1*88.9*33.7 6.5*3.5*1.327	2.07 300	130	130	58
168.3*88.9*33.7 6.625*3.5*1.327	2.07 300	130	130	58

**XGQT01G**

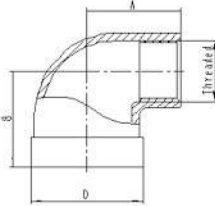
沟槽异径弯头

90° Reducing Elbow



Nominal size	Pipe O.D mm/in	Working Pressure Mpa/psi	Dimension mm/in
规格	钢管尺寸	工作压力	L
32*25 1 1/4*1	42.4* 33.7 1.66*1.327	2.07 300	70
40*25 1 1/2*1	48.3* 33.7 1.9*1.327	2.07 300	70
40*32 1 1/2*1 1/4	48.3*42.4 1.9*1.66	2.07 300	70
50*25 2*1	60.3* 33.7 2.375*1.327	2.07 300	83
50*32 2*1 1/4	60.3*42.4 2.375*1.66	2.07 300	83
60*40 2*1 1/2	60.3*48.3 2.375*1.9	2.07 300	83
65*25 2 1/2*1	76.1*33.7 3*1.327	2.07 300	95
65*32 2 1/2*1 1/4	76.1*42.4 3*1.66	2.07 300	95
65*40 2 1/2*1 1/2	76.1*48.3 3*1.9	2.07 300	95
65*50 2 1/2*2	76.1*60.3 3*2.375	2.07 300	95
80*25 3*1	88.9*33.7 3.5*1.327	2.07 300	108
80*32 3*1 1/4	88.9* 42.4 3.5*1.66	2.07 300	108
80*40 3*1 1/2	88.9* 48.3 3.5*1.9	2.07 300	108
80*50 3*2	88.9* 60.3 3.5*2.375	2.07 300	108
80*65 3*2 1/2	88.9* 76.1 3.5*3	2.07 300	108
100*65 4*2 1/2	114.3* 76.1 4.5*3	2.07 300	127
100*80 4*3	114.3* 88.9 4.5*3.5	2.07 300	127
150*100 6*4	165.1*114.3 6.5*4.5	2.07 300	165
150*100 6*4	168.3*114.3 6.625*4.5	2.07 300	165

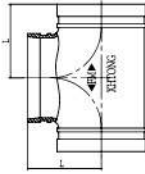
**XGQT01S**  
 丝接异径 90 度弯头  
 Reducing Elbow  
 Grooved x Threaded



BSPT and NPT threads are also available, please specify when order.

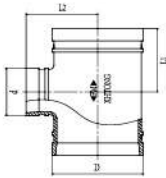
Nominal size 规格	Pipe O.D mm/in 钢管尺寸	Working Pressure Mpa/psi 工作压力	Dimension mm/in	
			A	B
25*15 1*1/2	33.7* 21.3 1.327*0.825	2.07 300	44	48
25*20 1*3/4	33.7* 26.7 1.327*1.05	2.07 300	44	48
32*15 1 1/4*1/2	42.4* 21.3 1.66*0.825	2.07 300	46	48
32*20 1 1/4*3/4	42.4* 26.7 1.66*1.05	2.07 300	46	48
32*25 1 1/4*1	42.4*33.7 1.66*1.327	2.07 300	51	52
40*15 1 1/2*1/2	48.3* 21.3 1.9*0.825	2.07 300	46	48
40*20 1 1/2*3/4	48.3* 26.7 1.9*1.05	2.07 300	46	48
40*25 1 1/2*1	48.3*33.7 1.9*1.327	2.07 300	51	52
50*15 2*1/2	60.3* 21.3 2.375*0.825	2.07 300	48	48
50*20 2*3/4	60.3* 26.7 2.375*1.05	2.07 300	48	48
50*25 2*1	60.3*33.7 2.375*1.327	2.07 300	51	52
65*15 2 1/2*1/2	73* 21.3 2.875*0.825	2.07 300	58	48
65*20 2 1/2*3/4	73* 26.7 2.875*1.05	2.07 300	58	48
65*25 2 1/2*1	73*33.7 2.875*1.327	2.07 300	65	55
65*15 2 1/2*1/2	76.1* 21.3 3*0.825	2.07 300	58	48
65*20 2 1/2*3/4	76.1* 26.7 3*1.05	2.07 300	58	48
65*25 2 1/2*1	76.1*33.7 3*1.327	2.07 300	65	55

**XGQT03**  
正三通  
Equal Tee



Nominal size 规格	Pipe O.D mm/in 钢管尺寸	Working Pressure Mpa/psi 工作压力	Dimension mm/in L		
25 1	33.7 1.315	2.07 300		57	57
32 1¼	42.4 1.66	2.07 300		60	70
40 1½	48.3 1.9	2.07 300		60	70
50 2	60.3 2.375	2.07 300	70	70	83
65 2½	73 2.875	2.07 300		76	95
65 2½	76.1 3	2.07 300	76	76	95
80 3	88.9 3.5	2.07 300	80	86	108
100 4	108 4.252	2.07 300	96	102	127
100 4	114.3 4.5	2.07 300	96	102	127
125 5	133 5.25	2.07 300	110	122	140
125 5	139.7 5.5	2.07 300	110	122	140
125 5	141.3 5.563	2.07 300		122	140
150 6	159 6.26	2.07 300	122	140	165
150 6	165.1 6.5	2.07 300	122	140	165
150 6	168.3 6.625	2.07 300	125	140	165
200 8	216.3 8.516	2.07 300		175	197
200 8	219.1 8.625	2.07 300	155	175	197
250 10	267.4 10.528	2.07 300		215	229
250 10	273 10.75	2.07 300	190	215	229
300 12	318.5 12.539	2.07 300		245	254
300 12	318.5 12.539	2.07 300		245	254
300 12	323.9 12.75	2.07 300	220	245	254
350 14	355.6 14.000	2.07 300			279
350 14	377.0 14.84	2.07 300			279
400 16	406.4 16.000	2.07 300			305
400 16	426.0 16.77	2.07 300			305
450 18	457.2 18.000	2.07 300			394
450 18	480.0 18.90	2.07 300			335
500 20	508.0 20.000	2.07 300			438
600 24	609.6 24.000	2.07 300			508

**XGQT05**  
沟槽异径三通  
Grooved Reducing Tee



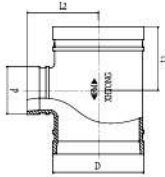
Nominal size	Pipe O.D mm/in	Working Pressure Mpa/psi	Dimension mm/in		Nominal size	Pipe O.D mm/in	Working Pressure Mpa/psi	Dimension mm/in	
			L1	L2				L1	L2
规格	钢管尺寸	工作压力	L1	L2	规格	钢管尺寸	工作压力	L1	L2
80*25 3*1	88.9*33.7 3.5*1.327	2.07 300	65	86	125*50 5*2	139.7*60.3 5.5*2.375	2.07 300	85	122
80*32 3*1½	88.9*42.4 3.5*1.66	2.07 300	70	86	125*65 5*2½	139.7*73 5.5*2.875	2.07 300	85	122
80*40 3*1¾	88.9*48.3 3.5*1.9	2.07 300	70	86	125*65 5*2¾	139.7*76.1 5.5*3	2.07 300	85	122
80*50 3*2	88.9*60.3 3.5*2.375	2.07 300	75	86	125*80 5*3	139.7*88.9 5.5*3.5	2.07 300	100	122
100*25 4*1	108*33.7 4.252*1.327	2.07 300	70	102	125*100 5*4	139.7*108 5.5*4.252	2.07 300	110	122
100*32 4*1¼	108*42.4 4.252*1.66	2.07 300	70	102	125*100 5*4	139.7*114.3 5.5*4.5	2.07 300	110	122
100*40 4*1½	108*48.3 4.252*1.9	2.07 300	75	102	125*25 5*1	141.3*33.7 5.563*1.327	2.07 300	70	122
100*50 4*2	108*60.3 4.252*2.375	2.07 300	85	102	125*32 5*1¼	141.3*42.4 5.563*1.66	2.07 300	70	122
100*65 4*2½	108*76.1 4.252*3	2.07 300	80	95	125*40 5*1½	141.3*48.3 5.563*1.9	2.07 300	75	122
100*80 4*3	108*88.9 4.252*3.5	2.07 300	85	95	125*50 5*2	141.3*60.3 5.563*2.375	2.07 300	85	122
100*25 4*1	114.3*33.7 4.5*1.327	2.07 300	70	102	125*65 5*2½	141.3*73 5.563*2.875	2.07 300	85	122
100*32 4*1¼	114.3*42.4 4.5*1.66	2.07 300	70	102	125*65 5*2¾	141.3*76.1 5.563*3	2.07 300	85	122
100*40 4*1½	114.3*48.3 4.5*1.9	2.07 300	75	102	125*80 5*3	141.3*88.9 5.563*3.5	2.07 300	100	122
100*50 4*2	114.3*60.3 4.5*2.375	2.07 300	85	102	125*100 5*4	141.3*108 5.563*4.252	2.07 300	110	122
100*65 4*2½	114.3*73 4.5*2.875	2.07 300	85	102	125*100 5*4	141.3*114.3 5.563*4.5	2.07 300	110	122
100*65 4*2¾	114.3*76.1 4.5*3	2.07 300	80	95	150*25 6*1	159*33.7 6.25*1.327	2.07 300	70	140
100*80 4*3	114.3*88.9 4.5*3.5	2.07 300	85	95	150*32 6*1¼	159*42.4 6.25*1.66	2.07 300	70	140
125*25 5*1	133*33.7 5.25*1.327	2.07 300	70	122	150*40 6*1½	159*48.3 6.25*1.9	2.07 300	75	140
125*32 5*1¼	133*42.4 5.25*1.66	2.07 300	70	122	150*50 6*2	159*60.3 6.25*2.375	2.07 300	85	140
125*40 5*1½	133*48.3 5.25*1.9	2.07 300	75	122	150*65 6*2½	159*73 6.25*2.875	2.07 300	85	140
125*50 5*2	133*60.3 5.25*2.375	2.07 300	85	122	150*65 6*2¾	159*76.1 6.25*3	2.07 300	85	135
125*65 5*2½	133*73 5.25*2.875	2.07 300	85	122	150*80 6*3	159*88.9 6.25*3.5	2.07 300	100	140
125*65 5*2¾	133*76.1 5.25*3	2.07 300	85	122	150*100 6*4	159*108 6.25*4.252	2.07 300	102	120
125*80 5*3	133*88.9 5.25*3.5	2.07 300	100	122	150*100 6*4	159*114.3 6.25*4.5	2.07 300	102	115
125*100 5*4	133*114.3 5.25*4.5	2.07 300	110	122	150*125 6*5	159*139.7 6.25*5.5	2.07 300	125	140
125*25 5*1	139.7*33.7 5.5*1.327	2.07 300	70	122	150*125 6*5	159*141.3 6.25*5.563	2.07 300	125	140
125*32 5*1¼	139.7*42.4 5.5*1.66	2.07 300	70	115	150*25 6*1	165.1*33.7 6.5*1.327	2.07 300	70	140
125*40 5*1½	139.7*48.3 5.5*1.9	2.07 300	75	122	150*32 6*1¼	165.1*42.4 6.5*1.66	2.07 300	70	130



**XGQT05**

沟槽异径三通

Grooved Reducing Tee

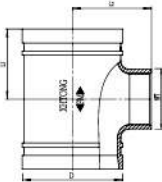


Nominal size	Pipe O.D mm/in	Working Pressure Mpa/psi	Dimension mm/in		Nominal size	Pipe O.D mm/in	Working Pressure Mpa/psi	Dimension mm/in	
			L1	L2				L1	L2
规格	钢管尺寸	工作压力	L1	L2	规格	钢管尺寸	工作压力	L1	L2
150*40	165.1*48.3	2.07	75	140	200*100	219.1*108	2.07	110	170
6*1/2	6.5*1.9	300			8*4	8.625*4.252	300		
150*50	165.1*60.3	2.07	85	140	200*100	219.1*114.3	2.07	110	155
6*2	6.5*2.375	300			8*4	8.625*4.5	300		
150*65	165.1*73	2.07	85	140	200*125	219.1*139.7	2.07	130	175
6*2 1/2	6.5*2.875	300			8*5	8.625*5.5	300		
150*65	165.1*76.1	2.07	80	115	200*125	219.1*141.3	2.07	130	175
6*2 1/2	6.5*3	300			8*5	8.625*5.563	300		
150*80	165.1*88.9	2.07	100	130	200*150	219.1*159	2.07	140	155
6*3	6.5*3.5	300			8*6	8.625*6.25	300		
150*100	165.1*108	2.07	102	120	200*150	219.1*165.1	2.07	140	155
6*4	6.5*4.252	300			8*6	8.625*6.5	300		
150*100	165.1*114.3	2.07	102	115	200*150	219.1*168.3	2.07	140	175
6*4	6.5*4.5	300			8*6	8.625*6.625	300		
150*125	165.1*139.7	2.07	110	125	250*50	273*60.3	2.07	90	197
6*5	6.5*5.5	300			10*2	10.75*2.375	300		
150*125	165.1*141.3	2.07	125	140	250*65	273*73.0	2.07	90	197
6*5	6.5*5.563	300			10*2 1/2	10.75*2.875	300		
150*25	168.3*33.7	2.07	70	140	250*65	273*76.1	2.07	90	197
6*1	6.625*1.327	300			10*2 1/2	10.75*3	300		
150*32	168.3*42.4	2.07	75	135	250*80	273*88.9	2.07	100	197
6*1 1/4	6.625*1.66	300			10*3	10.75*3.5	300		
150*40	168.3*48.3	2.07	75	135	250*100	273*108	2.07	125	210
6*1 1/2	6.625*1.9	300			10*4	10.75*4.252	300		
150*50	168.3*60.3	2.07	85	140	250*100	273*114.3	2.07	125	210
6*2	6.625*2.375	300			10*4	10.75*4.5	300		
150*65	168.3*73	2.07	85	140	250*125	273*139.7	2.07	130	215
6*2 1/2	6.625*2.875	300			10*5	10.75*5.5	300		
150*65	168.3*76.1	2.07	85	135	250*125	273*141.3	2.07	130	215
6*2 1/2	6.625*3	300			10*5	10.75*5.563	300		
150*80	168.3*88.9	2.07	100	140	250*150	273*159	2.07	155	215
6*3	6.625*3.5	300			10*6	10.75*6.25	300		
150*100	168.3*108	2.07	102	120	250*150	273*165.1	2.07	155	210
6*4	6.625*4.252	300			10*6	10.75*6.5	300		
150*100	168.3*114.3	2.07	105	120	250*150	273*168.3	2.07	155	210
6*4	6.625*4.5	300			10*6	10.75*6.625	300		
150*125	168.3*139.7	2.07	125	140	250*200	273*219.1	2.07	190	210
6*5	6.625*5.5	300			10*8	10.75*8.625	300		
150*125	168.3*141.3	2.07	125	140	300*100	323.9*114.3	2.07	125	230
6*5	6.625*5.563	300			12*4	12.75*4.5	300		
200*100	216.3*114.3	2.07	120	165	300*125	323.9*139.7	2.07	130	220
8*4	8.516*4.5	300			12*5	12.75*5.5	300		
200*150	216.3*165.1	2.07	145	175	300*125	323.9*141.3	2.07	130	220
8*6	8.516*6.5	300			12*5	112.75*5.563	300		
200*32	219.1*42.4	2.07	75	155	300*150	323.9*159	2.07	155	230
8*1 1/4	8.625*1.66	300			12*6	12.75*6.25	300		
200*40	219.1*48.3	2.07	75	155	300*150	323.9*165.1	2.07	155	230
8*1 1/2	8.625*1.9	300			12*6	12.75*6.5	300		
200*50	219.1*60.3	2.07	90	155	300*150	323.9*168.3	2.07	155	230
8*2	8.625*2.375	300			12*6	12.75*6.625	300		
200*65	219.1*73	2.07	90	155	300*200	323.9*219.1	2.07	190	235
8*2 1/2	8.625*2.875	300			12*8	12.75*8.625	300		
200*65	219.1*76.1	2.07	90	160	300*250	323.9*273	2.07	220	235
8*2 1/2	8.625*3	300			12*10	12.75*10.75	300		
200*80	219.1*88.9	2.07	100	165					
8*3	8.625*3.5	300							

**XGQT05S**

螺纹异径三通

Threaded Reducing Tee

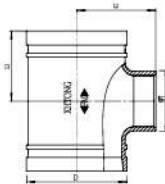


Nominal size	Pipe O.D mm/in	Working Pressure Mpa/psi	Dimension mm/in		Nominal size	Pipe O.D mm/in	Working Pressure Mpa/psi	Dimension mm/in	
			L1	L2				L1	L2
80*25 3*1	88.9*33.7 3.5*1.327	2.07 300	70	80	125*40 5*1 1/2	139.7*48.3 5.5*1.9	2.07 300	75	122
80*32 3*1 1/4	88.9*42.4 3.5*1.66	2.07 300	75	86	125*50 5*2	139.7*60.3 5.5*2.375	2.07 300	85	122
80*40 3*1 1/2	88.9*48.3 3.5*1.9	2.07 300	70	86	125*65 5*2 1/2	139.7*73 5.5*2.875	2.07 300	85	122
80*50 3*2	88.9*60.3 3.5*2.375	2.07 300	75	86	125*65 5*2 1/2	139.7*76.1 5.5*3	2.07 300	85	122
80*65 3*2 1/2	88.9*76.1 3.5*3	2.07 300	75	75	125*80 5*3	139.7*88.9 5.5*3.5	2.07 300	100	122
100*25 4*1	108*33.7 4.252*1.327	2.07 300	70	102	125*100 5*4	139.7*114.3 5.5*4.5	2.07 300	110	122
100*32 4*1 1/4	108*42.4 4.252*1.66	2.07 300	70	102	125*25 5*1	141.3*33.7 5.563*1.327	2.07 300	70	122
100*40 4*1 1/2	108*48.3 4.252*1.9	2.07 300	75	102	125*32 5*1 1/4	141.3*42.4 5.563*1.66	2.07 300	70	122
100*50 4*2	108*60.3 4.252*2.375	2.07 300	85	102	125*40 5*1 1/2	141.3*48.3 5.563*1.9	2.07 300	75	122
100*65 4*2 1/2	108*76.1 4.252*3	2.07 300	85	90	125*50 5*2	141.3*60.3 5.563*2.375	2.07 300	85	122
100*80 4*3	108*88.9 4.252*3.5	2.07 300	85	95	125*65 5*2 1/2	141.3*73 5.563*2.875	2.07 300	85	122
100*25 4*1	114.3*33.7 4.5*1.327	2.07 300	70	102	125*65 5*2 1/2	141.3*76.1 5.563*3	2.07 300	85	122
100*32 4*1 1/4	114.3*42.4 4.5*1.66	2.07 300	70	102	125*80 5*3	141.3*88.9 5.563*3.5	2.07 300	100	122
100*40 4*1 1/2	114.3*48.3 4.5*1.9	2.07 300	75	102	125*100 5*4	141.3*114.3 5.563*4.5	2.07 300	110	122
100*50 4*2	114.3*60.3 4.5*2.375	2.07 300	85	102	150*25 6*1	159*33.7 6.25*1.327	2.07 300	70	140
100*65 4*2 1/2	114.3*73 4.5*2.875	2.07 300	85	102	150*32 6*1 1/4	159*42.4 6.25*1.66	2.07 300	70	140
100*65 4*2 1/2	114.3*76.1 4.5*3	2.07 300	75	90	150*40 6*1 1/2	159*48.3 6.25*1.9	2.07 300	75	140
100*80 4*3	114.3*88.9 4.5*3.5	2.07 300	85	90	150*50 6*2	159*60.3 6.25*2.375	2.07 300	85	140
125*25 5*1	133*33.7 5.25*1.327	2.07 300	70	122	150*65 6*2 1/2	159*73 6.25*2.875	2.07 300	85	140
125*32 5*1 1/4	133*42.4 5.25*1.66	2.07 300	70	122	150*65 6*2 1/2	159*76.1 6.25*3	2.07 300	85	135
125*40 5*1 1/2	133*48.3 5.25*1.9	2.07 300	75	122	150*80 6*3	159*88.9 6.25*3.5	2.07 300	100	140
125*50 5*2	133*60.3 5.25*2.375	2.07 300	85	122	150*100 6*4	159*114.3 6.25*4.5	2.07 300	102	120
125*65 5*2 1/2	133*73 5.25*2.875	2.07 300	85	122	150*25 6*1	165.1*33.7 6.5*1.327	2.07 300	70	130
125*65 5*2 1/2	133*76.1 5.25*3	2.07 300	85	122	150*32 6*1 1/4	165.1*42.4 6.5*1.66	2.07 300	70	130
125*80 5*3	133*88.9 5.25*3.5	2.07 300	100	122	150*40 6*1 1/2	165.1*48.3 6.5*1.9	2.07 300	75	130
125*100 5*4	133*114.3 5.25*4.5	2.07 300	110	122	150*50 6*2	165.1*60.3 6.5*2.375	2.07 300	85	140
125*25 5*1	139.7*33.7 5.5*1.327	2.07 300	70	115	150*65 6*2 1/2	165.1*73 6.5*2.875	2.07 300	85	140
125*32 5*1 1/4	139.7*42.4 5.5*1.66	2.07 300	70	122	150*65 6*2 1/2	165.1*76.1 6.5*3	2.07 300	80	115

**XGQT05S**

螺纹异径三通

Threaded Reducing Tee

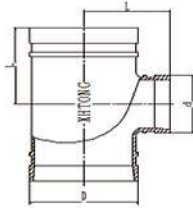


Nominal size	Pipe O.D mm/in	Working Pressure Mpa/psi	Dimension mm/in	
			L1	L2
规格	钢管尺寸	工作压力	L1	L2
150*80 6*3	165.1*88.9 6.5*3.5	2.07 300	100	130
150*100 6*4	165.1*114.3 6.5*4.5	2.07 300	110	140
150*25 6*1	168.3*33.7 6.625*1.327	2.07 300	70	125
150*32 6*1/4	168.3*42.4 6.625*1.66	2.07 300	70	130
150*40 6*1/2	168.3*48.3 6.625*1.9	2.07 300	75	140
150*50 6*2	168.3*60.3 6.625*2.375	2.07 300	85	140
150*65 6*2/2	168.3*73 6.625*2.875	2.07 300	85	140
150*65 6*2½	168.3*76.1 6.625*3	2.07 300	85	135
150*80 6*3	168.3*88.9 6.625*3.5	2.07 300	100	130
150*100 6*4	168.3*114.3 6.625*4.5	2.07 300	110	140
200*32 8*1/4	219.1*42.4 8.625*1.66	2.07 300	75	155
200*40 8*1/2	219.1*48.3 8.625*1.9	2.07 300	75	155
200*50 8*2	219.1*60.3 8.625*2.375	2.07 300	85	150
200*65 8*2/2	219.1*73 8.625*2.875	2.07 300	90	155
200*65 8*2½	219.1*76.1 8.625*3	2.07 300	95	150
200*80 8*3	219.1*88.9 8.625*3.5	2.07 300	100	155
200*100 8*4	219.1*114.3 8.625*4.5	2.07 300	110	155
250*50 10*2	273*60.3 10.75*2.375	2.07 300	90	197
250*65 10*2½	273*73.0 10.75*2.875	2.07 300	90	197
250*65 10*2½	273*76.1 10.75*3	2.07 300	90	197
250*80 10*3	273*88.9 10.75*3.5	2.07 300	100	197
250*100 10*4	273*114.3 10.75*4.5	2.07 300	125	210
300*100 12*4	323.9*114.3 12.75*4.5	2.07 300	125	220

**XGQT05L**

长沟槽异径三通

Long Radius Grooved Reducing Tee

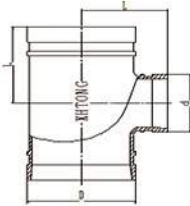


Nominal size	Pipe O.D mm/in	Working Pressure Mpa/psi	Dimension mm/in	Nominal size	Pipe O.D mm/in	Working Pressure Mpa/psi	Dimension mm/in
规格	钢管尺寸	工作压力	L	规格	钢管尺寸	工作压力	L
32*25 1½*1	42.4*33.7 1.66*1.327	2.07 300	70	100*80 4*3	108*88.9 4.252*3.5	2.07 300	102
40*25 1½*1	48.3*33.7 1.9*1.327	2.07 300	70	100*25 4*1	114.3*33.7 4.5*1.327	2.07 300	102
4*32 1½*1½	48.3*42.4 1.9*1.66	2.07 300	70	100*32 4*1¼	114.3*42.4 4.5*1.66	2.07 300	102
50*25 2*1	60.3*33.7 2.375*1.327	2.07 300	70	100*40 4*1½	114.3*48.3 4.5*1.9	2.07 300	102
50*32 2*1¼	60.3*42.4 2.375*1.66	2.07 300	70	100*50 4*2	114.3*60.3 4.5*2.375	2.07 300	102
60*40 2*1½	60.3*48.3 2.375*1.9	2.07 300	70	100*65 4*2½	114.3*73 4.5*2.875	2.07 300	102
65*25 2½*1	73*33.7 2.875*1.327	2.07 300	76	100*65 4*2½	114.3*76.1 4.5*3	2.07 300	102
65*32 2½*1¼	73*42.4 2.875*1.66	2.07 300	76	100*80 4*3	114.3*88.9 4.5*3.5	2.07 300	102
65*40 2½*1½	73*48.3 2.875*1.9	2.07 300	76	125*25 5*1	133*33.7 5.25*1.327	2.07 300	122
65*50 2½*2	73*60.3 2.875*2.375	2.07 300	76	125*32 5*1¼	133*42.4 5.25*1.66	2.07 300	122
65*25 2½*1	76.1*33.7 3*1.327	2.07 300	76	125*40 5*1½	133*48.3 5.25*1.9	2.07 300	122
65*32 2½*1¼	76.1*42.4 3*1.66	2.07 300	76	125*50 5*2	133*60.3 5.25*2.375	2.07 300	122
65*40 2½*1½	76.1*48.3 3*1.9	2.07 300	76	125*65 5*2½	133*73 5.25*2.875	2.07 300	122
65*50 2½*2	76.1*60.3 3*2.375	2.07 300	76	125*65 5*2½	133*76.1 5.25*3	2.07 300	122
80*25 3*1	88.9*33.7 3.5*1.327	2.07 300	86	125*80 5*3	133*88.9 5.25*3.5	2.07 300	122
80*32 3*1¼	88.9*42.4 3.5*1.66	2.07 300	86	125*100 5*4	133*114.3 5.25*4.5	2.07 300	122
80*40 3*1½	88.9*48.3 3.5*1.9	2.07 300	86	125*25 5*1	139.7*33.7 5.5*1.327	2.07 300	122
80*50 3*2	88.9*60.3 3.5*2.375	2.07 300	86	125*32 5*1¼	139.7*42.4 5.5*1.66	2.07 300	122
80*65 3*2½	88.9*73 3.5*2.875	2.07 300	86	125*40 5*1½	139.7*48.3 5.5*1.9	2.07 300	122
80*65 3*2½	88.9*76.1 3.5*3	2.07 300	86	125*50 5*2	139.7*60.3 5.5*2.375	2.07 300	122
100*25 4*1	108*33.7 4.252*1.327	2.07 300	102	125*65 5*2½	139.7*73 5.5*2.875	2.07 300	122
100*32 4*1¼	108*42.4 4.252*1.66	2.07 300	102	125*65 5*2½	139.7*76.1 5.5*3	2.07 300	122
100*40 4*1½	108*48.3 4.252*1.9	2.07 300	102	125*80 5*3	139.7*88.9 5.5*3.5	2.07 300	122
100*50 4*2	108*60.3 4.252*2.375	2.07 300	102	125*100 5*4	139.7*108 5.5*4.252	2.07 300	122
100*65 4*2½	108*73 4.252*2.875	2.07 300	102	125*100 5*4	139.7*114.3 5.5*4.5	2.07 300	122
100*65 4*2½	108*76.1 4.252*3	2.07 300	102	125*25 5*1	141.3*33.7 5.563*1.327	2.07 300	122

**XGQT05L**

长沟槽异径三通

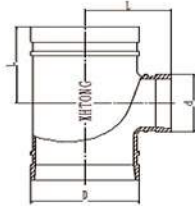
Long Radius  
Grooved Reducing Tee



Nominal size	Pipe O.D mm/in	Working Pressure Mpa/psi	Dimension mm/in
规格	钢管尺寸	工作压力	L
125*32 5*1/4	141.3*42.4 5.563*1.66	2.07 300	122
125*40 5*1/2	141.3*48.3 5.563*1.9	2.07 300	122
125*50 5*2	141.3*60.3 5.563*2.375	2.07 300	122
125*65 5*2 1/2	141.3*73 5.563*2.875	2.07 300	122
125*65 5*2 1/2	141.3*76.1 5.563*3	2.07 300	122
125*80 5*3	141.3*88.9 5.563*3.5	2.07 300	122
125*100 5*4	141.3*108 5.563*4.252	2.07 300	122
125*100 5*4	141.3*114.3 5.563*4.5	2.07 300	122
150*25 6*1	159*33.7 6.25*1.327	2.07 300	140
150*32 6*1 1/4	159*42.4 6.25*1.66	2.07 300	140
150*40 6*1 1/2	159*48.3 6.25*1.9	2.07 300	140
150*50 6*2	159*60.3 6.25*2.375	2.07 300	140
150*65 6*2 1/2	159*73 6.25*2.875	2.07 300	140
150*65 6*2 1/2	159*76.1 6.25*3	2.07 300	140
150*80 6*3	159*88.9 6.25*3.5	2.07 300	140
150*100 6*4	159*108 6.25*4.252	2.07 300	140
150*100 6*4	159*114.3 6.25*4.5	2.07 300	140
150*125 6*5	159*139.7 6.25*5.5	2.07 300	140
150*125 6*5	159*141.3 6.25*5.563	2.07 300	140
150*25 6*1	165.1*33.7 6.5*1.327	2.07 300	140
150*32 6*1 1/4	165.1*42.4 6.5*1.66	2.07 300	140
150*40 6*1 1/2	165.1*48.3 6.5*1.9	2.07 300	140
150*50 6*2	165.1*60.3 6.5*2.375	2.07 300	140
150*65 6*2 1/2	165.1*73 6.5*2.875	2.07 300	140
150*65 6*2 1/2	165.1*76.1 6.5*3	2.07 300	140
150*80 6*3	165.1*88.9 6.5*3.5	2.07 300	140

Nominal size	Pipe O.D mm/in	Working Pressure Mpa/psi	Dimension mm/in
规格	钢管尺寸	工作压力	L
150*100 6*4	165.1*108 6.5*4.252	2.07 300	140
150*100 6*4	165.1*114.3 6.5*4.5	2.07 300	140
150*125 6*5	165.1*139.7 6.5*5.5	2.07 300	140
150*125 6*5	165.1*141.3 6.5*5.563	2.07 300	140
150*25 6*1	168.3*33.7 6.625*1.327	2.07 300	140
150*32 6*1 1/4	168.3*42.4 6.625*1.66	2.07 300	140
150*40 6*1 1/2	168.3*48.3 6.625*1.9	2.07 300	140
150*50 6*2	168.3*60.3 6.625*2.375	2.07 300	140
150*65 6*2 1/2	168.3*73 6.625*2.875	2.07 300	140
150*65 6*2 1/2	168.3*76.1 6.625*3	2.07 300	140
150*80 6*3	168.3*88.9 6.625*3.5	2.07 300	140
150*100 6*4	168.3*108 6.625*4.252	2.07 300	140
150*100 6*4	168.3*114.3 6.625*4.5	2.07 300	140
150*125 6*5	168.3*139.7 6.625*5.5	2.07 300	140
150*125 6*5	168.3*141.3 6.625*5.563	2.07 300	140
200*50 8*2	219.1*60.3 8.625*2.375	2.07 300	175
200*65 8*2 1/2	219.1*73 8.625*2.875	2.07 300	175
200*65 8*2 1/2	219.1*76.1 8.625*3	2.07 300	175
200*80 8*3	219.1*88.9 8.625*3.5	2.07 300	175
200*100 8*4	219.1*108 8.625*4.252	2.07 300	175
200*100 8*4	219.1*114.3 8.625*4.5	2.07 300	175
200*125 8*5	219.1*139.7 8.625*5.5	2.07 300	175
200*125 8*5	219.1*141.3 8.625*5.563	2.07 300	175
200*150 8*6	219.1*159 8.625*6.25	2.07 300	175
200*150 8*6	219.1*165.1 8.625*6.5	2.07 300	175
200*150 8*6	219.1*168.3 8.625*6.625	2.07 300	175

**XGQT05L**  
 长沟槽异径三通  
 Long Radius  
 Grooved Reducing Tee

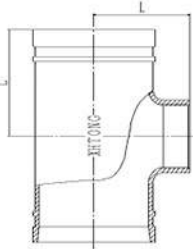


Nominal size	Pipe O.D mm/in	Working Pressure Mpa/psi	Dimension mm/in
规格	钢管尺寸	工作压力	L
250*100 10*4	273*108 10.75*4.252	2.07 300	229
250*100 10*4	273*114.3 10.75*4.5	2.07 300	229
250*125 10*5	273*139.7 10.75*5.5	2.07 300	229
250*125 10*5	273*141.3 10.75*5.563	2.07 300	229
250*150 10*6	273*159 10.75*6.25	2.07 300	229
250*150 10*6	273*165.1 10.75*6.5	2.07 300	229
250*150 10*6	273*168.3 10.75*6.625	2.07 300	229
250*200 10*8	273*219.1 10.75*8.625	2.07 300	229
300*100 12*4	323.9*114.3 12.75*4.5	2.07 300	254
300*125 12*5	323.9*139.7 12.75*5.5	2.07 300	254
300*125 12*5	323.9*141.3 112.75*5.563	2.07 300	254
300*150 12*6	323.9*159 12.75*6.25	2.07 300	254
300*150 12*6	323.9*165.1 12.75*6.5	2.07 300	254
300*150 12*6	323.9*168.3 12.75*6.625	2.07 300	254
300*200 12*8	323.9*219.1 12.75*8.625	2.07 300	254
300*250 12*10	323.9*273 12.75*10.75	2.07 300	254

**XGQT05LS**

长螺纹异径三通

Long Radius  
Threaded Reducing Tee



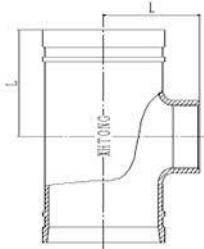
Nominal size	Pipe O.D mm/in	Working Pressure Mpa/psi	Dimension mm/in
规格	钢管尺寸	工作压力	L
32*25 1½*1	42.4*33.7 1.66*1.327	2.07 300	70
40*25 1½*1	48.3*33.7 1.9*1.327	2.07 300	70
40*32 1½*1½	48.3*42.4 1.9*1.66	2.07 300	70
50*25 2*1	60.3*33.7 2.375*1.327	2.07 300	70
50*32 2*1½	60.3*42.4 2.375*1.66	2.07 300	70
60*40 2*1½	60.3*48.3 2.375*1.9	2.07 300	70
65*25 2½*1	73*33.7 2.875*1.327	2.07 300	76
65*32 2½*1½	73*42.4 2.875*1.66	2.07 300	76
65*40 2½*1½	73*48.3 2.875*1.9	2.07 300	76
65*50 2½*2	73*60 2.875*2.375	2.07 300	76
65*25 2½*1	76.1*33.7 3*1.327	2.07 300	76
65*32 2½*1½	76.1*42.4 3*1.66	2.07 300	76
65*40 2½*1½	76.1*48.3 3*1.9	2.07 300	76
65*50 2½*2	76.1*60.3 3*2.375	2.07 300	76
80*25 3*1	88.9*33.7 3.5*1.327	2.07 300	86
80*32 3*1½	88.9*42.4 3.5*1.66	2.07 300	86
80*40 3*1½	88.9*48.3 3.5*1.9	2.07 300	86
80*50 3*2	88.9*60.3 3.5*2.375	2.07 300	86
80*65 3*2½	88.9*73 3.5*2.875	2.07 300	86
80*65 3*2½	88.9*76.1 3.5*3	2.07 300	86
100*25 4*1	108*33.7 4.252*1.327	2.07 300	102
100*32 4*1¼	108*42.4 4.252*1.66	2.07 300	102
100*40 4*1½	108*48.3 4.252*1.9	2.07 300	102
100*50 4*2	108*60.3 4.252*2.375	2.07 300	102
100*65 4*2½	108*73 4.252*2.875	2.07 300	102
100*65 4*2½	108*76.1 4.252*3	2.07 300	102

Nominal size	Pipe O.D mm/in	Working Pressure Mpa/psi	Dimension mm/in
规格	钢管尺寸	工作压力	L
100*80 4*3	108*88.9 4.252*3.5	2.07 300	102
100*25 4*1	114.3*33.7 4.5*1.327	2.07 300	102
100*32 4*1¼	114.3*42.4 4.5*1.66	2.07 300	102
100*40 4*1½	114.3*48.3 4.5*1.9	2.07 300	102
100*50 4*2	114.3*60.3 4.5*2.375	2.07 300	102
100*65 4*2½	114.3*73 4.5*2.875	2.07 300	102
100*65 4*2½	114.3*76.1 4.5*3	2.07 300	102
100*80 4*3	114.3*88.9 4.5*3.5	2.07 300	102
125*25 5*1	133*33.7 5.25*1.327	2.07 300	122
125*32 5*1¼	133*42.4 5.25*1.66	2.07 300	122
125*40 5*1½	133*48.3 5.25*1.9	2.07 300	122
125*50 5*2	133*60.3 5.25*2.375	2.07 300	122
125*65 5*2½	133*73 5.25*2.875	2.07 300	122
125*65 5*2½	133*76.1 5.25*3	2.07 300	122
125*80 5*3	133*88.9 5.25*3.5	2.07 300	122
125*100 5*4	133*114.3 5.25*4.5	2.07 300	122
125*25 5*1	139.7*33.7 5.5*1.327	2.07 300	122
125*32 5*1¼	139.7*42.4 5.5*1.66	2.07 300	122
125*40 5*1½	139.7*48.3 5.5*1.9	2.07 300	122
125*50 5*2	139.7*60.3 5.5*2.375	2.07 300	122
125*65 5*2½	139.7*73 5.5*2.875	2.07 300	122
125*65 5*2½	139.7*76.1 5.5*3	2.07 300	122
125*80 5*3	139.7*88.9 5.5*3.5	2.07 300	122
125*100 5*4	139.7*114.3 5.5*4.5	2.07 300	122
125*25 5*1	141.3*33.7 5.563*1.327	2.07 300	122
125*32 5*1¼	141.3*42.4 5.563*1.66	2.07 300	122

**XGQT05LS**

长螺纹异径三通

Long Radius  
Threaded Reducing Tee



Nominal size	Pipe O.D mm/in	Working Pressure Mpa/psi	Dimension mm/in
规格	钢管尺寸	工作压力	L
125*40 5*1/2	141.3*48.3 5.563*1.9	2.07 300	122
125*50 5*2	141.3*60.3 5.563*2.375	2.07 300	122
125*65 5*2 1/2	141.3*73 5.563*2.875	2.07 300	122
125*65 5*2 1/2	141.3*76.1 5.563*3	2.07 300	122
125*80 5*3	141.3*88.9 5.563*3.5	2.07 300	122
125*100 5*4	141.3*114.3 5.563*4.5	2.07 300	122
150*25 6*1	159*33.7 6.25*1.327	2.07 300	140
150*32 6*1 1/4	159*42.4 6.25*1.66	2.07 300	140
150*40 6*1 1/2	159*48.3 6.25*1.9	2.07 300	140
150*50 6*2	159*60.3 6.25*2.375	2.07 300	140
150*65 6*2 1/2	159*73 6.25*2.875	2.07 300	140
150*65 6*2 1/2	159*76.1 6.25*3	2.07 300	140
150*80 6*3	159*88.9 6.25*3.5	2.07 300	140
150*100 6*4	159*114.3 6.25*4.5	2.07 300	140
150*25 6*1	165.1*33.7 6.5*1.327	2.07 300	140
150*32 6*1 1/4	165.1*42.4 6.5*1.66	2.07 300	140
150*40 6*1 1/2	165.1*48.3 6.5*1.9	2.07 300	140
150*50 6*2	165.1*60.3 6.5*2.375	2.07 300	140

Nominal size	Pipe O.D mm/in	Working Pressure Mpa/psi	Dimension mm/in
规格	钢管尺寸	工作压力	L
150*65 6*2 1/2	165.1*73 6.5*2.875	2.07 300	140
150*65 6*2 1/2	165.1*76.1 6.5*3	2.07 300	140
150*80 6*3	165.1*88.9 6.5*3.5	2.07 300	140
150*100 6*4	165.1*114.3 6.5*4.5	2.07 300	140
150*25 6*1	168.3*33.7 6.625*1.327	2.07 300	140
150*32 6*1 1/4	168.3*42.4 6.625*1.66	2.07 300	140
150*40 6*1 1/2	168.3*48.3 6.625*1.9	2.07 300	140
150*50 6*2	168.3*60.3 6.625*2.375	2.07 300	140
150*65 6*2 1/2	168.3*73 6.625*2.875	2.07 300	140
150*65 6*2 1/2	168.3*76.1 6.625*3	2.07 300	140
150*80 6*3	168.3*88.9 6.625*3.5	2.07 300	140
150*100 6*4	168.3*114.3 6.625*4.5	2.07 300	140
200*50 8*2	219.1*60.3 8.625*2.375	2.07 300	175
200*65 8*2 1/2	219.1*73 8.625*2.875	2.07 300	175
200*65 8*2 1/2	219.1*76.1 8.625*3	2.07 300	175
200*80 8*3	219.1*88.9 8.625*3.5	2.07 300	175
200*100 8*4	219.1*114.3 8.625*4.5	2.07 300	175
250*100 10*4	273*114.3 10.75*4.5	2.07 300	229
300*100 12*4	323.9*114.3 12.75*4.5	2.07 300	254



**XGQT05E**  
中大三通  
Bullhead Tee

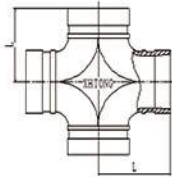


Nominal size 规格	Pipe O.D mm/in 钢管尺寸	Working Pressure Mpa/psi 工作压力	Dimension mm/in	
			L1	L2
50*50*65 2*2*2 <sup>1</sup> / <sub>2</sub>	60.3*60.3*73 2.375*2.375*2.875	2.07 300	95	83
50*50*80 2*2*3	60.3*60.3*88.9 2.375*2.375*3.5	2.07 300	108	95
50*50*100 2*2*4	60.3*60.3*114.3 2.375*2.375*4.5	2.07 300	127	102
65*65*80 2 <sup>1</sup> / <sub>2</sub> *2 <sup>1</sup> / <sub>2</sub> *3	73*73*88.9 2.875*2.875*3.5	2.07 300	108	95
65*65*100 2 <sup>1</sup> / <sub>2</sub> *2 <sup>1</sup> / <sub>2</sub> *4	73*73*114.3 2.875*2.875*4.5	2.07 300	127	102
65*65*80 2 <sup>1</sup> / <sub>2</sub> *2 <sup>1</sup> / <sub>2</sub> *3	76.1*76.1*88.9 3*3*3.5	2.07 300	108	95
65*65*100 2 <sup>1</sup> / <sub>2</sub> *2 <sup>1</sup> / <sub>2</sub> *4	76.1*76.1*114.3 3*3*4.5	2.07 300	127	102
80*80*100 3*3*4	88.9*88.9*114.3 3.5*3.5*4.5	2.07 300	127	102
100*100*150 4*4*6	114.3*114.3*168.3 4.5*4.5*6.625	2.07 300	165	127
125*125*200 5*5*8	141.3*141.3*219.1 5.563*5.563*8.625	2.07 300	197	140
150*150*200 6*6*8	168.3*168.3*219.1 6.625*6.625*8.625	2.07 300	197	165

**XGQT04**

正四通

Equal Cross

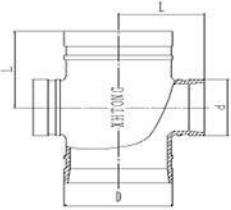


Nominal size	Pipe O.D mm/in	Working Pressure Mpa/psi	Dimension mm/in		
			L1		
25	33.7	2.07		57	57
1	1.315	300			
32	42.4	2.07		60	70
1 1/4	1.66	300			
40	48.3	2.07		60	70
1 1/2	1.9	300			
50	60.3	2.07	70	70	83
2	2.375	300			
65	73	2.07		76	95
2 1/2	2.875	300			
65	76.1	2.07	76	76	95
2 1/2	3	300			
80	88.9	2.07	80	86	108
3	3.5	300			
100	108	2.07	96	102	127
4	4.252	300			
100	114.3	2.07	96	102	127
4	4.5	300			
125	133	2.07	110	122	140
5	5.25	300			
125	139.7	2.07	110	122	140
5	5.5	300			
125	141.3	2.07		122	140
5	5.563	300			
150	159	2.07	122	140	165
6	6.26	300			
150	165.1	2.07	122	140	165
6	6.5	300			
150	168.3	2.07	125	140	165
6	6.625	300			
200	216.3	2.07		175	197
8	8.516	300			
200	219.1	2.07	155	175	197
8	8.625	300			
250	267.4	2.07		215	229
10	10.528	300			
250	273	2.07	190	215	229
10	10.75	300			
300	318.5	2.07		245	254
12	12.539	300			
300	323.9	2.07	220	245	254
12	12.75	300			
350	355.6	2.07			279
14	14.000	300			
350	377.0	2.07			279
14	14.84	300			
400	406.4	2.07			305
16	16.000	300			
400	426.0	2.07			305
16	16.77	300			
450	457.2	2.07			394
18	18.000	300			
450	480.0	2.07			335
18	18.90	300			
500	508.0	2.07			438
20	20.000	300			
600	609.6	2.07			508
24	24.000	300			

**XGQT06**

沟槽异径四通

Grooved Reducing Cross

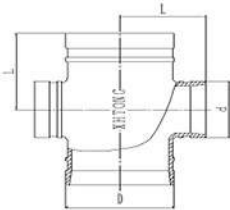


Nominal size	Pipe O.D mm/in	Working Pressure Mpa/psi	Dimension mm/in		Nominal size	Pipe O.D mm/in	Working Pressure Mpa/psi	Dimension mm/in	
			L1	L2				L1	L2
规格	钢管尺寸	工作压力	L1	L2	规格	钢管尺寸	工作压力	L1	L2
80*25 3*1	88.9*33.7 3.5*1.327	2.07 300	65	86	125*50 5*2	139.7*60.3 5.5*2.375	2.07 300	85	122
80*32 3*1 1/4	88.9*42.4 3.5*1.66	2.07 300	70	86	125*65 5*2 1/2	139.7*73 5.5*2.875	2.07 300	85	122
80*40 3*1 1/2	88.9*48.3 3.5*1.9	2.07 300	70	86	125*65 5*2 1/2	139.7*76.1 5.5*3	2.07 300	85	122
80*50 3*2	88.9*60.3 3.5*2.375	2.07 300	75	86	125*80 5*3	139.7*88.9 5.5*3.5	2.07 300	100	122
100*25 4*1	108*33.7 4.252*1.327	2.07 300	70	102	125*100 5*4	139.7*108 5.5*4.252	2.07 300	110	122
100*32 4*1 1/4	108*42.4 4.252*1.66	2.07 300	70	102	125*100 5*4	139.7*114.3 5.5*4.5	2.07 300	110	122
100*40 4*1 1/2	108*48.3 4.252*1.9	2.07 300	75	102	125*25 5*1	141.3*33.7 5.563*1.327	2.07 300	70	122
100*50 4*2	108*60.3 4.252*2.375	2.07 300	85	102	125*32 5*1 1/4	141.3*42.4 5.563*1.66	2.07 300	70	122
100*65 4*2 1/2	108*76.1 4.252*3	2.07 300	80	95	125*40 5*1 1/2	141.3*48.3 5.563*1.9	2.07 300	75	122
100*80 4*3	108*88.9 4.252*3.5	2.07 300	85	95	125*50 5*2	141.3*60.3 5.563*2.375	2.07 300	85	122
100*25 4*1	114.3*33.7 4.5*1.327	2.07 300	70	102	125*65 5*2 1/2	141.3*73 5.563*2.875	2.07 300	85	122
100*32 4*1 1/4	114.3*42.4 4.5*1.66	2.07 300	70	102	125*65 5*2 1/2	141.3*76.1 5.563*3	2.07 300	85	122
100*40 4*1 1/2	114.3*48.3 4.5*1.9	2.07 300	75	102	125*80 5*3	141.3*88.9 5.563*3.5	2.07 300	100	122
100*50 4*2	114.3*60.3 4.5*2.375	2.07 300	85	102	125*100 5*4	141.3*108 5.563*4.252	2.07 300	110	122
100*65 4*2 1/2	114.3*73 4.5*2.875	2.07 300	85	102	125*100 5*4	141.3*114.3 5.563*4.5	2.07 300	110	122
100*65 4*2 1/2	114.3*76.1 4.5*3	2.07 300	80	95	150*25 6*1	159*33.7 6.25*1.327	2.07 300	70	140
100*80 4*3	114.3*88.9 4.5*3.5	2.07 300	85	95	150*32 6*1 1/4	159*42.4 6.25*1.66	2.07 300	70	140
125*25 5*1	133*33.7 5.25*1.327	2.07 300	70	122	150*40 6*1 1/2	159*48.3 6.25*1.9	2.07 300	75	140
125*32 5*1 1/4	133*42.4 5.25*1.66	2.07 300	70	122	150*50 6*2	159*60.3 6.25*2.375	2.07 300	85	140
125*40 5*1 1/2	133*48.3 5.25*1.9	2.07 300	75	122	150*65 6*2 1/2	159*73 6.25*2.875	2.07 300	85	140
125*50 5*2	133*60.3 5.25*2.375	2.07 300	85	122	150*65 6*2 1/2	159*76.1 6.25*3	2.07 300	85	135
125*65 5*2 1/2	133*73 5.25*2.875	2.07 300	85	122	150*80 6*3	159*88.9 6.25*3.5	2.07 300	100	140
125*65 5*2 1/2	133*76.1 5.25*3	2.07 300	85	122	150*100 6*4	159*108 6.25*4.252	2.07 300	102	120
125*80 5*3	133*88.9 5.25*3.5	2.07 300	100	122	150*100 6*4	159*114.3 6.25*4.5	2.07 300	102	120
125*100 5*4	133*114.3 5.25*4.5	2.07 300	110	122	150*125 6*5	159*139.7 6.25*5.5	2.07 300	125	140
125*25 5*1	139.7*33.7 5.5*1.327	2.07 300	70	122	150*125 6*5	159*141.3 6.25*5.563	2.07 300	125	140
125*32 5*1 1/4	139.7*42.4 5.5*1.66	2.07 300	70	122	150*25 6*1	165.1*33.7 6.5*1.327	2.07 300	70	140
125*40 5*1 1/2	139.7*48.3 5.5*1.9	2.07 300	75	122	150*32 6*1 1/4	165.1*42.4 6.5*1.66	2.07 300	70	140

**XGQT06**

沟槽异径四通

Grooved Reducing Cross

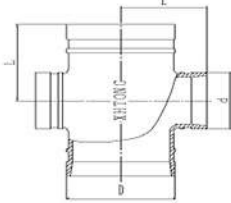


Nominal size	Pipe O.D mm/in	Working Pressure Mpa/psi	Dimension mm/in		Nominal size	Pipe O.D mm/in	Working Pressure Mpa/psi	Dimension mm/in	
			L1	L2				L1	L2
规格	钢管尺寸	工作压力	L1	L2	规格	钢管尺寸	工作压力	L1	L2
150*40 6*1/2	165.1*48.3 6.5*1.9	2.07 300	75	140	200*125 8*5	219.1*139.7 8.625*5.5	2.07 300	130	175
150*50 6*2	165.1*60.3 6.5*2.375	2.07 300	85	140	200*125 8*5	219.1*141.3 8.625*5.563	2.07 300	130	175
150*65 6*2 1/2	165.1*73 6.5*2.875	2.07 300	85	140	200*150 8*6	219.1*159 8.625*6.25	2.07 300	140	155
150*65 6*2 1/2	165.1*76.1 6.5*3	2.07 300	85	135	200*150 8*6	219.1*165.1 8.625*6.5	2.07 300	140	155
150*80 6*3	165.1*88.9 6.5*3.5	2.07 300	100	140	200*150 8*6	219.1*168.3 8.625*6.625	2.07 300	140	175
150*100 6*4	165.1*108 6.5*4.252	2.07 300	102	120	250*50 10*2	273*60.3 10.75*2.375	2.07 300	90	197
150*100 6*4	165.1*114.3 6.5*4.5	2.07 300	102	120	250*65 10*2 1/2	273*73.0 10.75*2.875	2.07 300	90	197
150*125 6*5	165.1*139.7 6.5*5.5	2.07 300	125	140	250*65 10*2 1/2	273*76.1 10.75*3	2.07 300	90	197
150*125 6*5	165.1*141.3 6.5*5.563	2.07 300	125	140	250*80 10*3	273*88.9 10.75*3.5	2.07 300	100	197
150*25 6*1	168.3*33.7 6.625*1.327	2.07 300	70	140	250*100 10*4	273*108 10.75*4.252	2.07 300	125	210
150*32 6*1 1/4	168.3*42.4 6.625*1.66	2.07 300	70	140	250*100 10*4	273*114.3 10.75*4.5	2.07 300	125	210
150*40 6*1 1/2	168.3*48.3 6.625*1.9	2.07 300	75	140	250*125 10*5	273*139.7 10.75*5.5	2.07 300	130	215
150*50 6*2	168.3*60.3 6.625*2.375	2.07 300	85	140	250*125 10*5	273*141.3 10.75*5.563	2.07 300	130	215
150*65 6*2 1/2	168.3*73 6.625*2.875	2.07 300	85	140	250*150 10*6	273*159 10.75*6.25	2.07 300	155	215
150*65 6*2 1/2	168.3*76.1 6.625*3	2.07 300	85	135	250*150 10*6	273*165.1 10.75*6.5	2.07 300	155	215
150*80 6*3	168.3*88.9 6.625*3.5	2.07 300	100	140	250*150 10*6	273*168.3 10.75*6.625	2.07 300	155	215
150*100 6*4	168.3*108 6.625*4.252	2.07 300	102	120	250*200 10*8	273*219.1 10.75*8.625	2.07 300	190	210
150*100 6*4	168.3*114.3 6.625*4.5	2.07 300	102	120	300*100 12*4	323.9*114.3 12.75*4.5	2.07 300	125	220
150*125 6*5	168.3*139.7 6.625*5.5	2.07 300	125	140	300*125 12*5	323.9*139.7 12.75*5.5	2.07 300	130	220
150*125 6*5	168.3*141.3 6.625*5.563	2.07 300	125	140	300*125 12*5	323.9*141.3 112.75*5.563	2.07 300	130	220
200*32 8*1 1/4	219.1*42.4 8.625*1.66	2.07 300	75	155	300*150 12*6	323.9*159 12.75*6.25	2.07 300	155	230
200*40 8*1 1/2	219.1*48.3 8.625*1.9	2.07 300	75	155	300*150 12*6	323.9*165.1 12.75*6.5	2.07 300	155	230
200*50 8*2	219.1*60.3 8.625*2.375	2.07 300	90	155	300*150 12*6	323.9*168.3 12.75*6.625	2.07 300	155	230
200*65 8*2 1/2	219.1*73 8.625*2.875	2.07 300	90	155	300*200 12*8	323.9*219.1 12.75*8.625	2.07 300	190	235
200*65 8*2 1/2	219.1*76.1 8.625*3	2.07 300	90	160	300*250 12*10	323.9*273 12.75*10.75	2.07 300	220	235
200*80 8*3	219.1*88.9 8.625*3.5	2.07 300	100	165					
200*100 8*4	219.1*108 8.625*4.252	2.07 300	110	170					
200*100 8*4	219.1*114.3 8.625*4.5	2.07 300	110	170					

**XGQT06L**

长沟槽异径四通

Long Radius  
Grooved Reducing Cross



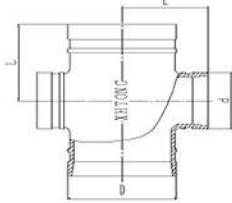
Nominal size	Pipe O.D mm/in	Working Pressure Mpa/psi	Dimension mm/in
规格	钢管尺寸	工作压力	L
32*25 1½*1	42.4*33.7 1.66*1.327	2.07 300	70
40*25 1½*1	48.3*33.7 1.9*1.327	2.07 300	70
4*32 1½*1¼	48.3*42.4 1.9*1.66	2.07 300	70
50*25 2*1	60.3*33.7 2.375*1.327	2.07 300	70
50*32 2*1¼	60.3*42.4 2.375*1.66	2.07 300	70
60*40 2*1½	60.3*48.3 2.375*1.9	2.07 300	70
65*25 2½*1	73*33.7 2.875*1.327	2.07 300	76
65*32 2½*1¼	73*42.4 2.875*1.66	2.07 300	76
65*40 2½*1½	73*48.3 2.875*1.9	2.07 300	76
65*50 2½*2	73*60.3 2.875*2.375	2.07 300	76
65*25 2½*1	76.1*33.7 3*1.327	2.07 300	76
65*32 2½*1¼	76.1*42.4 3*1.66	2.07 300	76
65*40 2½*1½	76.1*48.3 3*1.9	2.07 300	76
65*50 2½*2	76.1*60.3 3*2.375	2.07 300	76
80*25 3*1	88.9*33.7 3.5*1.327	2.07 300	86
80*32 3*1¼	88.9*42.4 3.5*1.66	2.07 300	86
80*40 3*1½	88.9*48.3 3.5*1.9	2.07 300	86
80*50 3*2	88.9*60.3 3.5*2.375	2.07 300	86
80*65 3*2½	88.9*73 3.5*2.875	2.07 300	86
80*65 3*2½	88.9*76.1 3.5*3	2.07 300	86
100*25 4*1	108*33.7 4.252*1.327	2.07 300	102
100*32 4*1¼	108*42.4 4.252*1.66	2.07 300	102
100*40 4*1½	108*48.3 4.252*1.9	2.07 300	102
100*50 4*2	108*60.3 4.252*2.375	2.07 300	102
100*65 4*2½	108*73 4.252*2.875	2.07 300	102
100*65 4*2½	108*76.1 4.252*3	2.07 300	102

Nominal size	Pipe O.D mm/in	Working Pressure Mpa/psi	Dimension mm/in
规格	钢管尺寸	工作压力	L
100*80 4*3	108*88.9 4.252*3.5	2.07 300	102
100*25 4*1	114.3*33.7 4.5*1.327	2.07 300	102
100*32 4*1¼	114.3*42.4 4.5*1.66	2.07 300	102
100*40 4*1½	114.3*48.3 4.5*1.9	2.07 300	102
100*50 4*2	114.3*60.3 4.5*2.375	2.07 300	102
100*65 4*2½	114.3*73 4.5*2.875	2.07 300	102
100*65 4*2½	114.3*76.1 4.5*3	2.07 300	102
100*80 4*3	114.3*88.9 4.5*3.5	2.07 300	102
125*25 5*1	133*33.7 5.25*1.327	2.07 300	122
125*32 5*1¼	133*42.4 5.25*1.66	2.07 300	122
125*40 5*1½	133*48.3 5.25*1.9	2.07 300	122
125*50 5*2	133*60.3 5.25*2.375	2.07 300	122
125*65 5*2½	133*73 5.25*2.875	2.07 300	122
125*65 5*2½	133*76.1 5.25*3	2.07 300	122
125*80 5*3	133*88.9 5.25*3.5	2.07 300	122
125*100 5*4	133*114.3 5.25*4.5	2.07 300	122
125*25 5*1	139.7*33.7 5.5*1.327	2.07 300	122
125*32 5*1¼	139.7*42.4 5.5*1.66	2.07 300	122
125*40 5*1½	139.7*48.3 5.5*1.9	2.07 300	122
125*50 5*2	139.7*60.3 5.5*2.375	2.07 300	122
125*65 5*2½	139.7*73 5.5*2.875	2.07 300	122
125*65 5*2½	139.7*76.1 5.5*3	2.07 300	122
125*80 5*3	139.7*88.9 5.5*3.5	2.07 300	122
125*100 5*4	139.7*108 5.5*4.252	2.07 300	122
125*100 5*4	139.7*114.3 5.5*4.5	2.07 300	122
125*25 5*1	141.3*33.7 5.563*1.327	2.07 300	122

**XGQT06L**

长沟槽异径四通

Long Radius  
Grooved Reducing Cross



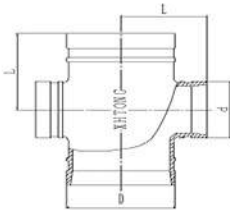
Nominal size	Pipe O.D mm/in	Working Pressure Mpa/psi	Dimension mm/in
规格	钢管尺寸	工作压力	L
125*32 5*1/4	141.3*42.4 5.563*1.66	2.07 300	122
125*40 5*1/2	141.3*48.3 5.563*1.9	2.07 300	122
125*50 5*2	141.3*60.3 5.563*2.375	2.07 300	122
125*65 5*2 1/2	141.3*73 5.563*2.875	2.07 300	122
125*65 5*2 1/2	141.3*76.1 5.563*3	2.07 300	122
125*80 5*3	141.3*88.9 5.563*3.5	2.07 300	122
125*100 5*4	141.3*108 5.563*4.252	2.07 300	122
125*100 5*4	141.3*114.3 5.563*4.5	2.07 300	122
150*25 6*1	159*33.7 6.25*1.327	2.07 300	140
150*32 6*1/4	159*42.4 6.25*1.66	2.07 300	140
150*40 6*1/2	159*48.3 6.25*1.9	2.07 300	140
150*50 6*2	159*60.3 6.25*2.375	2.07 300	140
150*65 6*2 1/2	159*73 6.25*2.875	2.07 300	140
150*65 6*2 1/2	159*76.1 6.25*3	2.07 300	140
150*80 6*3	159*88.9 6.25*3.5	2.07 300	140
150*100 6*4	159*108 6.25*4.252	2.07 300	140
150*100 6*4	159*114.3 6.25*4.5	2.07 300	140
150*125 6*5	159*139.7 6.25*5.5	2.07 300	140
150*125 6*5	159*141.3 6.25*5.563	2.07 300	140
150*25 6*1	165.1*33.7 6.5*1.327	2.07 300	140
150*32 6*1/4	165.1*42.4 6.5*1.66	2.07 300	140
150*40 6*1/2	165.1*48.3 6.5*1.9	2.07 300	140
150*50 6*2	165.1*60.3 6.5*2.375	2.07 300	140
150*65 6*2 1/2	165.1*73 6.5*2.875	2.07 300	140
150*65 6*2 1/2	165.1*76.1 6.5*3	2.07 300	140
150*80 6*3	165.1*88.9 6.5*3.5	2.07 300	140

Nominal size	Pipe O.D mm/in	Working Pressure Mpa/psi	Dimension mm/in
规格	钢管尺寸	工作压力	L
150*100 6*4	165.1*108 6.5*4.252	2.07 300	140
150*100 6*4	165.1*114.3 6.5*4.5	2.07 300	140
150*125 6*5	165.1*139.7 6.5*5.5	2.07 300	140
150*125 6*5	165.1*141.3 6.5*5.563	2.07 300	140
150*25 6*1	168.3*33.7 6.625*1.327	2.07 300	140
150*32 6*1/4	168.3*42.4 6.625*1.66	2.07 300	140
150*40 6*1/2	168.3*48.3 6.625*1.9	2.07 300	140
150*50 6*2	168.3*60.3 6.625*2.375	2.07 300	140
150*65 6*2 1/2	168.3*73 6.625*2.875	2.07 300	140
150*65 6*2 1/2	168.3*76.1 6.625*3	2.07 300	140
150*80 6*3	168.3*88.9 6.625*3.5	2.07 300	140
150*100 6*4	168.3*108 6.625*4.252	2.07 300	140
150*100 6*4	168.3*114.3 6.625*4.5	2.07 300	140
150*125 6*5	168.3*139.7 6.625*5.5	2.07 300	140
150*125 6*5	168.3*141.3 6.625*5.563	2.07 300	140
200*50 8*2	219.1*60.3 8.625*2.375	2.07 300	175
200*65 8*2 1/2	219.1*73 8.625*2.875	2.07 300	175
200*65 8*2 1/2	219.1*76.1 8.625*3	2.07 300	175
200*80 8*3	219.1*88.9 8.625*3.5	2.07 300	175
200*100 8*4	219.1*108 8.625*4.252	2.07 300	175
200*100 8*4	219.1*114.3 8.625*4.5	2.07 300	175
200*125 8*5	219.1*139.7 8.625*5.5	2.07 300	175
200*125 8*5	219.1*141.3 8.625*5.563	2.07 300	175
200*150 8*6	219.1*159 8.625*6.25	2.07 300	175
200*150 8*6	219.1*165.1 8.625*6.5	2.07 300	175
200*150 8*6	219.1*168.3 8.625*6.625	2.07 300	175

**XGQT06L**

长沟槽异径四通

Long Radius  
Grooved Reducing Cross

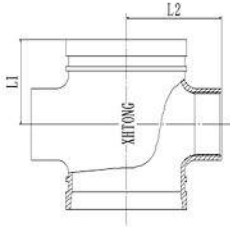


Nominal size	Pipe O.D mm/in	Working Pressure Mpa/psi	Dimension mm/in
规格	钢管尺寸	工作压力	L
250*100 10*4	273*108 10.75*4.252	2.07 300	229
250*100 10*4	273*114.3 10.75*4.5	2.07 300	229
250*125 10*5	273*139.7 10.75*5.5	2.07 300	229
250*125 10*5	273*141.3 10.75*5.563	2.07 300	229
250*150 10*6	273*159 10.75*6.25	2.07 300	229
250*150 10*6	273*165.1 10.75*6.5	2.07 300	229
250*150 10*6	273*168.3 10.75*6.625	2.07 300	229
250*200 10*8	273*219.1 10.75*8.625	2.07 300	229
300*100 12*4	323.9*114.3 12.75*4.5	2.07 300	254
300*125 12*5	323.9*139.7 12.75*5.5	2.07 300	254
300*125 12*5	323.9*141.3 112.75*5.563	2.07 300	254
300*150 12*6	323.9*159 12.75*6.25	2.07 300	254
300*150 12*6	323.9*165.1 12.75*6.5	2.07 300	254
300*150 12*6	323.9*168.3 12.75*6.625	2.07 300	254
300*200 12*8	323.9*219.1 12.75*8.625	2.07 300	254
300*250 12*10	323.9*273 12.75*10.75	2.07 300	254

**XGQT06S**

螺纹异径四通

Threaded Reducing Cross



Nominal size	Pipe O.D mm/in	Working Pressure Mpa/psi	Dimension mm/in	
			L1	L2
80*25 3*1	88.9*33.7 3.5*1.327	2.07 300	65	86
80*32 3*1 1/4	88.9*42.4 3.5*1.66	2.07 300	70	86
80*40 3*1 1/2	88.9*48.3 3.5*1.9	2.07 300	70	86
80*50 3*2	88.9*60.3 3.5*2.375	2.07 300	75	86
100*25 4*1	108*33.7 4.252*1.327	2.07 300	70	102
100*32 4*1 1/4	108*42.4 4.252*1.66	2.07 300	70	102
100*40 4*1 1/2	108*48.3 4.252*1.9	2.07 300	75	102
100*50 4*2	108*60.3 4.252*2.375	2.07 300	85	102
100*65 4*2 1/2	108*76.1 4.252*3	2.07 300	80	95
100*80 4*3	108*88.9 4.252*3.5	2.07 300	85	95
100*25 4*1	114.3*33.7 4.5*1.327	2.07 300	70	102
100*32 4*1 1/4	114.3*42.4 4.5*1.66	2.07 300	70	102
100*40 4*1 1/2	114.3*48.3 4.5*1.9	2.07 300	75	102
100*50 4*2	114.3*60.3 4.5*2.375	2.07 300	85	102
100*65 4*2 1/2	114.3*73 4.5*2.875	2.07 300	85	102
100*65 4*2 1/2	114.3*76.1 4.5*3	2.07 300	80	95
100*80 4*3	114.3*88.9 4.5*3.5	2.07 300	85	95
125*25 5*1	133*33.7 5.25*1.327	2.07 300	70	122
125*32 5*1 1/4	133*42.4 5.25*1.66	2.07 300	70	122
125*40 5*1 1/2	133*48.3 5.25*1.9	2.07 300	75	122
125*50 5*2	133*60.3 5.25*2.375	2.07 300	85	122
125*65 5*2 1/2	133*73 5.25*2.875	2.07 300	85	122
125*65 5*2 1/2	133*76.1 5.25*3	2.07 300	85	122
125*80 5*3	133*88.9 5.25*3.5	2.07 300	100	122
125*100 5*4	133*114.3 5.25*4.5	2.07 300	110	122
125*25 5*1	139.7*33.7 5.5*1.327	2.07 300	70	122
125*32 5*1 1/4	139.7*42.4 5.5*1.66	2.07 300	70	122
125*40 5*1 1/2	139.7*48.3 5.5*1.9	2.07 300	75	122
125*50 5*2	139.7*60.3 5.5*2.375	2.07 300	85	122
125*65 5*2 1/2	139.7*73 5.5*2.875	2.07 300	85	122

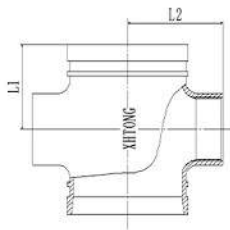
Nominal size	Pipe O.D mm/in	Working Pressure Mpa/psi	Dimension mm/in	
			L1	L2
125*65 5*2 1/2	139.7*76.1 5.5*3	2.07 300	85	122
125*80 5*3	139.7*88.9 5.5*3.5	2.07 300	100	122
125*100 5*4	139.7*114.3 5.5*4.5	2.07 300	110	122
125*25 5*1	141.3*33.7 5.563*1.327	2.07 300	70	122
125*32 5*1 1/4	141.3*42.4 5.563*1.66	2.07 300	70	122
125*40 5*1 1/2	141.3*48.3 5.563*1.9	2.07 300	75	122
125*50 5*2	141.3*60.3 5.563*2.375	2.07 300	85	122
125*65 5*2 1/2	141.3*73 5.563*2.875	2.07 300	85	122
125*65 5*2 1/2	141.3*76.1 5.563*3	2.07 300	85	122
125*80 5*3	141.3*88.9 5.563*3.5	2.07 300	100	122
125*100 5*4	141.3*114.3 5.563*4.5	2.07 300	110	122
150*25 6*1	159*33.7 6.25*1.327	2.07 300	70	140
150*32 6*1 1/4	159*42.4 6.25*1.66	2.07 300	70	140
150*40 6*1 1/2	159*48.3 6.25*1.9	2.07 300	75	140
150*50 6*2	159*60.3 6.25*2.375	2.07 300	85	140
150*65 6*2 1/2	159*73 6.25*2.875	2.07 300	85	140
150*65 6*2 1/2	159*76.1 6.25*3	2.07 300	85	135
150*80 6*3	159*88.9 6.25*3.5	2.07 300	100	140
150*100 6*4	159*114.3 6.25*4.5	2.07 300	102	120
150*25 6*1	165.1*33.7 6.5*1.327	2.07 300	70	140
150*32 6*1 1/4	165.1*42.4 6.5*1.66	2.07 300	70	140
150*40 6*1 1/2	165.1*48.3 6.5*1.9	2.07 300	75	140
150*50 6*2	165.1*60.3 6.5*2.375	2.07 300	85	140
150*65 6*2 1/2	165.1*73 6.5*2.875	2.07 300	85	140
150*65 6*2 1/2	165.1*76.1 6.5*3	2.07 300	85	135
150*80 6*3	165.1*88.9 6.5*3.5	2.07 300	100	140
150*100 6*4	165.1*114.3 6.5*4.5	2.07 300	102	120
150*25 6*1	168.3*33.7 6.625*1.327	2.07 300	70	140
150*32 6*1 1/4	168.3*42.4 6.625*1.66	2.07 300	70	140
150*40 6*1 1/2	168.3*48.3 6.625*1.9	2.07 300	75	140



**XGQT06S**

螺纹异径四通

Threaded Reducing Cross



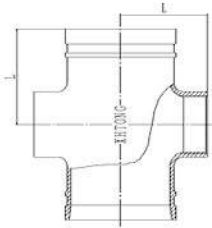
Nominal size	Pipe O.D mm/in	Working Pressure Mpa/psi	Dimension mm/in	
			L1	L2
规格	钢管尺寸	工作压力		
150*50 6*2	168.3*60.3 6.625*2.375	2.07 300	85	140
150*65 6*2½	168.3*73 6.625*2.875	2.07 300	85	140
150*65 6*2½	168.3*76.1 6.625*3	2.07 300	85	135
150*80 6*3	168.3*88.9 6.625*3.5	2.07 300	100	140
150*100 6*4	168.3*114.3 6.625*4.5	2.07 300	102	120
200*32 8*1¼	219.1*42.4 8.625*1.66	2.07 300	75	155
200*40 8*1½	219.1*48.3 8.625*1.9	2.07 300	75	155
200*50 8*2	219.1*60.3 8.625*2.375	2.07 300	90	155
200*65 8*2½	219.1*73 8.625*2.875	2.07 300	90	155
200*65 8*2½	219.1*76.1 8.625*3	2.07 300	90	160
200*80 8*3	219.1*88.9 8.625*3.5	2.07 300	100	165
200*100 8*4	219.1*114.3 8.625*4.5	2.07 300	110	170
250*50 10*2	273*60.3 10.75*2.375	2.07 300	90	197
250*65 10*2½	273*73.0 10.75*2.875	2.07 300	90	197
250*65 10*2½	273*76.1 10.75*3	2.07 300	90	197
250*80 10*3	273*88.9 10.75*3.5	2.07 300	100	197
250*100 10*4	273*114.3 10.75*4.5	2.07 300	125	210
300*100 12*4	323.9*114.3 12.75*4.5	2.07 300	125	220

**XGQT06LS**

长螺纹异径四通

Long Radius

Threaded Reducing Cross



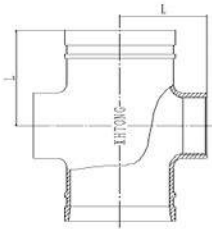
Nominal size	Pipe O.D mm/in	Working Pressure Mpa/psi	Dimension mm/in
规格	钢管尺寸	工作压力	L
32*25 1½*1	42.4*33.7 1.66*1.327	2.07 300	70
40*25 1½*1	48.3*33.7 1.9*1.327	2.07 300	70
4*32 1½*1¼	48.3*42.4 1.9*1.66	2.07 300	70
50*25 2*1	60.3*33.7 2.375*1.327	2.07 300	70
50*32 2*1¼	60.3*42.4 2.375*1.66	2.07 300	70
60*40 2*1½	60.3*48.3 2.375*1.9	2.07 300	70
65*25 2½*1	73*33.7 2.875*1.327	2.07 300	76
65*32 2½*1¼	73*42.4 2.875*1.66	2.07 300	76
65*40 2½*1½	73*48.3 2.875*1.9	2.07 300	76
65*50 2½*2	73*60.3 2.875*2.375	2.07 300	76
65*25 2½*1	76.1*33.7 3*1.327	2.07 300	76
65*32 2½*1¼	76.1*42.4 3*1.66	2.07 300	76
65*40 2½*1½	76.1*48.3 3*1.9	2.07 300	76
65*50 2½*2	76.1*60.3 3*2.375	2.07 300	76
80*25 3*1	88.9*33.7 3.5*1.327	2.07 300	86
80*32 3*1¼	88.9*42.4 3.5*1.66	2.07 300	86
80*40 3*1½	88.9*48.3 3.5*1.9	2.07 300	86
80*50 3*2	88.9*60.3 3.5*2.375	2.07 300	86
80*65 3*2½	88.9*73 3.5*2.875	2.07 300	86
80*65 3*2½	88.9*76.1 3.5*3	2.07 300	86
100*25 4*1	108*33.7 4.252*1.327	2.07 300	102
100*32 4*1¼	108*42.4 4.252*1.66	2.07 300	102
100*40 4*1½	108*48.3 4.252*1.9	2.07 300	102

Nominal size	Pipe O.D mm/in	Working Pressure Mpa/psi	Dimension mm/in
规格	钢管尺寸	工作压力	L
100*50 4*2	108*60.3 4.252*2.375	2.07 300	102
100*65 4*2 ½	108*73 4.252*2.875	2.07 300	102
100*65 4*2 ½	108*76.1 4.252*3	2.07 300	102
100*80 4*3	108*88.9 4.252*3.5	2.07 300	102
100*25 4*1	114.3*33.7 4.5*1.327	2.07 300	102
100*32 4*1¼	114.3*42.4 4.5*1.66	2.07 300	102
100*40 4*1½	114.3*48.3 4.5*1.9	2.07 300	102
100*50 4*2	114.3*60.3 4.5*2.375	2.07 300	102
100*65 4*2 ½	114.3*73 4.5*2.875	2.07 300	102
100*65 4*2½	114.3*76.1 4.5*3	2.07 300	102
100*80 4*3	114.3*88.9 4.5*3.5	2.07 300	102
125*25 5*1	133*33.7 5.25*1.327	2.07 300	122
125*32 5*1¼	133*42.4 5.25*1.66	2.07 300	122
125*40 5*1½	133*48.3 5.25*1.9	2.07 300	122
125*50 5*2	133*60.3 5.25*2.375	2.07 300	122
125*65 5*2½	133*73 5.25*2.875	2.07 300	122
125*65 5*2½	133*76.1 5.25*3	2.07 300	122
125*80 5*3	133*88.9 5.25*3.5	2.07 300	122
125*100 5*4	133*114.3 5.25*4.5	2.07 300	122
125*25 5*1	139.7*33.7 5.5*1.327	2.07 300	122
125*32 5*1¼	139.7*42.4 5.5*1.66	2.07 300	122
125*40 5*1½	139.7*48.3 5.5*1.9	2.07 300	122
125*50 5*2	139.7*60.3 5.5*2.375	2.07 300	122

### XGQT06LS

长螺纹异径四通

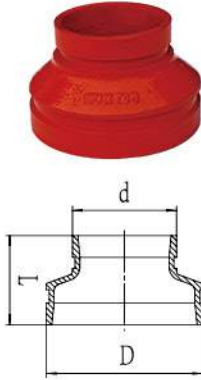
Long Radius  
Threaded Reducing Cross



Nominal size	Pipe O.D mm/in	Working Pressure Mpa/psi	Dimension mm/in
规格	钢管尺寸	工作压力	L
125*65 5*2 <sup>1</sup> / <sub>2</sub>	139.7*73 5.5*2.875	2.07 300	122
125*65 5*2 <sup>1</sup> / <sub>2</sub>	139.7*76.1 5.5*3	2.07 300	122
125*80 5*3	139.7*88.9 5.5*3.5	2.07 300	122
125*100 5*4	139.7*114.3 5.5*4.5	2.07 300	122
125*25 5*1	141.3*33.7 5.563*1.327	2.07 300	122
125*32 5*1 <sup>1</sup> / <sub>4</sub>	141.3*42.4 5.563*1.66	2.07 300	122
125*40 5*1 <sup>1</sup> / <sub>2</sub>	141.3*48.3 5.563*1.9	2.07 300	122
125*50 5*2	141.3*60.3 5.563*2.375	2.07 300	122
125*65 5*2 <sup>1</sup> / <sub>2</sub>	141.3*73 5.563*2.875	2.07 300	122
125*65 5*2 <sup>1</sup> / <sub>2</sub>	141.3*76.1 5.563*3	2.07 300	122
125*80 5*3	141.3*88.9 5.563*3.5	2.07 300	122
125*100 5*4	141.3*114.3 5.563*4.5	2.07 300	122
150*25 6*1	159*33.7 6.25*1.327	2.07 300	140
150*32 6*1 <sup>1</sup> / <sub>4</sub>	159*42.4 6.25*1.66	2.07 300	140
150*40 6*1 <sup>1</sup> / <sub>2</sub>	159*48.3 6.25*1.9	2.07 300	140
150*50 6*2	159*60.3 6.25*2.375	2.07 300	140
150*65 6*2 <sup>1</sup> / <sub>2</sub>	159*73 6.25*2.875	2.07 300	140
150*65 6*2 <sup>1</sup> / <sub>2</sub>	159*76.1 6.25*3	2.07 300	140
150*80 6*3	159*88.9 6.25*3.5	2.07 300	140
150*100 6*4	159*114.3 6.25*4.5	2.07 300	140
150*25 6*1	165.1*33.7 6.5*1.327	2.07 300	140
150*32 6*1 <sup>1</sup> / <sub>4</sub>	165.1*42.4 6.5*1.66	2.07 300	140
150*40 6*1 <sup>1</sup> / <sub>2</sub>	165.1*48.3 6.5*1.9	2.07 300	140

Nominal size	Pipe O.D mm/in	Working Pressure Mpa/psi	Dimension mm/in
规格	钢管尺寸	工作压力	L
150*50 6*2	165.1*60.3 6.5*2.375	2.07 300	140
150*65 6*2 <sup>1</sup> / <sub>2</sub>	165.1*73 6.5*2.875	2.07 300	140
150*65 6*2 <sup>1</sup> / <sub>2</sub>	165.1*76.1 6.5*3	2.07 300	140
150*80 6*3	165.1*88.9 6.5*3.5	2.07 300	140
150*100 6*4	165.1*114.3 6.5*4.5	2.07 300	140
150*25 6*1	168.3*33.7 6.625*1.327	2.07 300	140
150*32 6*1 <sup>1</sup> / <sub>4</sub>	168.3*42.4 6.625*1.66	2.07 300	140
150*40 6*1 <sup>1</sup> / <sub>2</sub>	168.3*48.3 6.625*1.9	2.07 300	140
150*50 6*2	168.3*60.3 6.625*2.375	2.07 300	140
150*65 6*2 <sup>1</sup> / <sub>2</sub>	168.3*73 6.625*2.875	2.07 300	140
150*65 6*2 <sup>1</sup> / <sub>2</sub>	168.3*76.1 6.625*3	2.07 300	140
150*80 6*3	168.3*88.9 6.625*3.5	2.07 300	140
150*100 6*4	168.3*114.3 6.625*4.5	2.07 300	140
200*50 8*2	219.1*60.3 8.625*2.375	2.07 300	175
200*65 8*2 <sup>1</sup> / <sub>2</sub>	219.1*73 8.625*2.875	2.07 300	175
200*65 8*2 <sup>1</sup> / <sub>2</sub>	219.1*76.1 8.625*3	2.07 300	175
200*80 8*3	219.1*88.9 8.625*3.5	2.07 300	175
200*100 8*4	219.1*114.3 8.625*4.5	2.07 300	175
250*100 10*4	273*114.3 10.75*4.5	2.07 300	229
300*100 12*4	323.9*114.3 12.75*4.5	2.07 300	254

**XGQT07**  
沟槽同心异径管  
Grooved Concentric Reducer



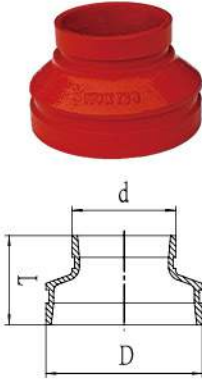
Nominal size	Pipe O.D mm/in	Working Pressure Mpa/psi	Dimension mm/in	
规格	钢管尺寸	工作压力	L	
32*25 1 1/4*1	42.4*33.7 1.66*1.327	2.07 300	64	
40*25 1 1/2*1	48.3*33.7 1.9*1.327	2.07 300	64	
4*32 1 1/2*1 1/4	48.3*42.4 1.9*1.66	2.07 300	64	
50*15 2*1/2	60.3*21.3 2.375*0.825	2.07 300	55	
50*20 2*1/4	60.3*26.9 2.375*1.05	2.07 300	55	
50*25 2*1	60.3*33.7 2.375*1.327	2.07 300	58	64
50*32 2*1 1/4	60.3*42.4 2.375*1.66	2.07 300	58	64
60*40 2*1 1/2	60.3*48.3 2.375*1.9	2.07 300	58	64
65*25 2 1/2*1	73*33.7 2.875*1.327	2.07 300	60	64
65*32 2 1/2*1 1/4	73*42.4 2.875*1.66	2.07 300	60	64
65*40 2 1/2*1 1/2	73*48.3 2.875*1.9	2.07 300	60	64
65*50 2 1/2*2	73*60.3 2.875*2.375	2.07 300	55	64
65*15 2 1/2*1/2	76.1*21.3 3*0.825	2.07 300	55	64
65*20 2 1/2*3/4	76.1*26.9 3*1.05	2.07 300	55	64
65*25 2 1/2*1	76.1*33.7 3*1.327	2.07 300	60	64
65*32 2 1/2*1 1/4	76.1*42.4 3*1.66	2.07 300	60	64
65*40 2 1/2*1 1/2	76.1*48.3 3*1.9	2.07 300	60	64
65*50 2 1/2*2	76.1*60.3 3*2.375	2.07 300	58	64
80*15 3*1/2	88.9*21.3 3.5*0.825	2.07 300	60	64
80*20 3*3/4	88.9*26.9 3.5*1.05	2.07 300	60	64
80*25 3*1	88.9*33.7 3.5*1.327	2.07 300	60	64
80*32 3*1 1/4	88.9*42.4 3.5*1.66	2.07 300	60	64
80*40 3*1 1/2	88.9*48.3 3.5*1.9	2.07 300	60	64
80*50 3*2	88.9*60.3 3.5*2.375	2.07 300	60	64
80*65 3*2 1/2	88.9*73 3.5*2.875	2.07 300	60	64
80*65 3*2 1/2	88.9*76.1 3.5*3	2.07 300	60	64
100*25 4*1	108*33.7 4.252*1.327	2.07 300	65	76
100*32 4*1 1/4	108*42.4 4.252*1.66	2.07 300	65	76
100*40 4*1 1/2	108*48.3 4.252*1.9	2.07 300	65	76
100*50 4*2	108*60.3 4.252*2.375	2.07 300	65	76
100*65 4*2 1/2	108*73 4.252*2.875	2.07 300	65	76
100*65 4*2 1/2	108*76.1 4.252*3	2.07 300	65	76

Nominal size	Pipe O.D mm/in	Working Pressure Mpa/psi	Dimension mm/in	
规格	钢管尺寸	工作压力	L	
100*80 4*3	108*88.9 4.252*3.5	2.07 300	65	76
100*25 4*1	114.3*33.7 4.5*1.327	2.07 300	65	76
100*32 4*1 1/4	114.3*42.4 4.5*1.66	2.07 300	65	76
100*40 4*1 1/2	114.3*48.3 4.5*1.9	2.07 300	65	76
100*50 4*2	114.3*60.3 4.5*2.375	2.07 300	65	76
100*65 4*2 1/2	114.3*73 4.5*2.875	2.07 300	65	76
100*65 4*2 1/2	114.3*76.1 4.5*3	2.07 300	65	76
100*80 4*3	114.3*88.9 4.5*3.5	2.07 300	65	76
125*25 5*1	133*33.7 5.25*1.327	2.07 300	70	89
125*32 5*1 1/4	133*42.4 5.25*1.66	2.07 300	70	89
125*40 5*1 1/2	133*48.3 5.25*1.9	2.07 300	70	89
125*50 5*2	133*60.3 5.25*2.375	2.07 300	70	89
125*65 5*2 1/2	133*73 5.25*2.875	2.07 300	70	89
125*65 5*2 1/2	133*76.1 5.25*3	2.07 300	70	89
125*80 5*3	133*88.9 5.25*3.5	2.07 300	70	89
125*100 5*4	133*114.3 5.25*4.5	2.07 300	65	89
125*25 5*1	139.7*33.7 5.5*1.327	2.07 300	70	89
125*32 5*1 1/4	139.7*42.4 5.5*1.66	2.07 300	70	89
125*40 5*1 1/2	139.7*48.3 5.5*1.9	2.07 300	70	89
125*50 5*2	139.7*60.3 5.5*2.375	2.07 300	70	89
125*65 5*2 1/2	139.7*73 5.5*2.875	2.07 300	70	89
125*65 5*2 1/2	139.7*76.1 5.5*3	2.07 300	70	89
125*80 5*3	139.7*88.9 5.5*3.5	2.07 300	70	89
125*100 5*4	139.7*108 5.5*4.252	2.07 300	70	89
125*100 5*4	139.7*114.3 5.5*4.5	2.07 300	70	89
125*25 5*1	141.3*33.7 5.563*1.327	2.07 300	70	89
125*32 5*1 1/4	141.3*42.4 5.563*1.66	2.07 300	70	89
125*40 5*1 1/2	141.3*48.3 5.563*1.9	2.07 300	70	89
125*50 5*2	141.3*60.3 5.563*2.375	2.07 300	70	89
125*65 5*2 1/2	141.3*73 5.563*2.875	2.07 300	70	89
125*65 5*2 1/2	141.3*76.1 5.563*3	2.07 300	70	89
125*80 5*3	141.3*88.9 5.563*3.5	2.07 300	70	89

**XGQT07**

沟槽同心异径管

Grooved Concentric Reducer



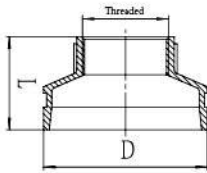
Nominal size	Pipe O.D mm/in	Working Pressure Mpa/psi	Dimension mm/in	
			L	
规格	钢管尺寸	工作压力	L	
125*100 5*4	141.3*108 5.563*4.252	2.07 300	70	89
125*100 5*4	141.3*114.3 5.563*4.5	2.07 300	70	89
150*25 6*1	159*33.7 6.25*1.327	2.07 300	75	102
150*32 6*1 1/4	159*42.4 6.25*1.66	2.07 300	75	102
150*40 6*1 1/2	159*48.3 6.25*1.9	2.07 300	75	102
150*50 6*2	159*60.3 6.25*2.375	2.07 300	75	102
150*65 6*2 1/2	159*73 6.25*2.875	2.07 300	75	102
150*65 6*2 1/2	159*76.1 6.25*3	2.07 300	75	102
150*80 6*3	159*88.9 6.25*3.5	2.07 300	75	102
150*100 6*4	159*108 6.25*4.252	2.07 300	75	102
150*100 6*4	159*114.3 6.25*4.5	2.07 300	75	102
150*125 6*5	159*139.7 6.25*5.5	2.07 300	75	102
150*125 6*5	159*141.3 6.25*5.563	2.07 300	75	102
150*25 6*1	165.1*33.7 6.5*1.327	2.07 300	75	102
150*32 6*1 1/4	165.1*42.4 6.5*1.66	2.07 300	75	102
150*40 6*1 1/2	165.1*48.3 6.5*1.9	2.07 300	75	102
150*50 6*2	165.1*60.3 6.5*2.375	2.07 300	75	102
150*65 6*2 1/2	165.1*73 6.5*2.875	2.07 300	75	102
150*65 6*2 1/2	165.1*76.1 6.5*3	2.07 300	75	102
150*80 6*3	165.1*88.9 6.5*3.5	2.07 300	75	102
150*100 6*4	165.1*108 6.5*4.252	2.07 300	75	102
150*100 6*4	165.1*114.3 6.5*4.5	2.07 300	75	102
150*125 6*5	165.1*139.7 6.5*5.5	2.07 300	65	102
150*125 6*5	165.1*141.3 6.5*5.563	2.07 300	65	102
150*25 6*1	168.3*33.7 6.625*1.327	2.07 300	75	102
150*32 6*1 1/4	168.3*42.4 6.625*1.66	2.07 300	75	102
150*40 6*1 1/2	168.3*48.3 6.625*1.9	2.07 300	75	102
150*50 6*2	168.3*60.3 6.625*2.375	2.07 300	75	102
150*65 6*2 1/2	168.3*73 6.625*2.875	2.07 300	75	102
150*65 6*2 1/2	168.3*76.1 6.625*3	2.07 300	75	102
150*80 6*3	168.3*88.9 6.625*3.5	2.07 300	75	102
150*100 6*4	168.3*108 6.625*4.252	2.07 300	75	102

Nominal size	Pipe O.D mm/in	Working Pressure Mpa/psi	Dimension mm/in	
			L	
规格	钢管尺寸	工作压力	L	
150*100 6*4	168.3*114.3 6.625*4.5	2.07 300	75	102
150*125 6*5	168.3*139.7 6.625*5.5	2.07 300	65	102
150*125 6*5	168.3*141.3 6.625*5.563	2.07 300	65	102
200*100 8*4	216.3*114.3 8.516*4.5	2.07 300	85	127
200*125 8*5	216.3*139.7 8.516*5.5	2.07 300	85	127
200*150 8*6	216.3*165.1 8.516*6.5	2.07 300	85	127
200*50 8*2	219.1*60.3 8.625*2.375	2.07 300	85	127
200*65 8*2 1/2	219.1*73 8.625*2.875	2.07 300	85	127
200*65 8*2 1/2	219.1*76.1 8.625*3	2.07 300	85	127
200*80 8*3	219.1*88.9 8.625*3.5	2.07 300	85	127
200*100 8*4	219.1*108 8.625*4.252	2.07 300	85	127
200*100 8*4	219.1*114.3 8.625*4.5	2.07 300	85	127
200*125 8*5	219.1*139.7 8.625*5.5	2.07 300	85	127
200*125 8*5	219.1*141.3 8.625*5.563	2.07 300	85	127
200*150 8*6	219.1*159 8.625*6.25	2.07 300	80	127
200*150 8*6	219.1*165.1 8.625*6.5	2.07 300	80	127
200*150 8*6	219.1*168.3 8.625*6.625	2.07 300	80	127
250*100 10*4	273*108 10.75*4.252	2.07 300	90	152
250*100 10*4	273*114.3 10.75*4.5	2.07 300	90	152
250*125 10*5	273*139.7 10.75*5.5	2.07 300	90	152
250*125 10*5	273*141.3 10.75*5.563	2.07 300	90	152
250*150 10*6	273*159 10.75*6.25	2.07 300	90	152
250*150 10*6	273*165.1 10.75*6.5	2.07 300	90	152
250*150 10*6	273*168.3 10.75*6.625	2.07 300	90	152
250*200 10*8	273*219.1 10.75*8.625	2.07 300	85	152
300*100 12*4	323.9*114.3 12.75*4.5	2.07 300	90	178
300*125 12*5	323.9*139.7 12.75*5.5	2.07 300	90	178
300*125 12*5	323.9*141.3 12.75*5.563	2.07 300	90	178
300*150 12*6	323.9*159 12.75*6.25	2.07 300	90	178
300*150 12*6	323.9*165.1 12.75*6.5	2.07 300	90	178
300*150 12*6	323.9*168.3 12.75*6.625	2.07 300	90	178
300*200 12*8	323.9*219.1 12.75*8.625	2.07 300	90	178
300*250 12*10	323.9*273 12.75*10.75	2.07 300	90	178

**XGQT07S**

螺纹同心异径管

Threaded Concentric Reducer



BSPT and NPT threads are also available, please specify when order.

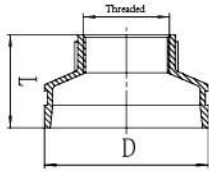
Nominal size	Pipe O.D mm/in	Working Pressure Mpa/psi	Dimension mm/in	
规格	钢管尺寸	工作压力	L	
32*25 1 1/4*1	42.4*33.7 1.66*1.327	2.07 300	64	
40*25 1 1/2*1	48.3*33.7 1.9*1.327	2.07 300	64	
4*32 1 1/2*1 1/4	48.3*42.7 1.9*1.66	2.07 300	64	
50*15 2*1/2	60.3*21.3 2.375*0.825	2.07 300	55	
50*20 2*3/4	60.3*26.9 2.375*1.05	2.07 300	55	
50*25 2*1	60.3*33.7 2.375*1.327	2.07 300	58	64
50*32 2*1 1/4	60.3*42.4 2.375*1.66	2.07 300	58	64
60*40 2*1 1/2	60.3*48.3 2.375*1.9	2.07 300	58	64
65*15 2 1/2*1/2	73*21.3 2.875*0.825	2.07 300	55	64
65*20 2 1/2*3/4	73*26.9 2.875*1.05	2.07 300	55	64
65*25 2 3/4*1	73*33.7 2.875*1.327	2.07 300	60	64
65*32 2 3/4*1 1/4	73*42.4 2.875*1.66	2.07 300	60	64
65*40 2 3/4*1 1/2	73*48.3 2.875*1.9	2.07 300	60	64
65*50 2 3/4*2	73*60.3 2.875*2.375	2.07 300	55	64
65*15 2 1/2*1/2	76.1*21.3 3*0.825	2.07 300	55	64
65*20 2 1/2*3/4	76.1*26.9 3*1.05	2.07 300	55	64
65*25 2 1/2*1	76.1*33.7 3*1.327	2.07 300	60	64
65*32 2 3/4*1 1/4	76.1*42.4 3*1.66	2.07 300	60	64
65*40 2 3/4*1 1/2	76.1*48.3 3*1.9	2.07 300	60	64
65*50 2 3/4*2	76.1*60.3 3*2.375	2.07 300	58	64
80*15 3*1/2	88.9*21.3 3.5*0.825	2.07 300	64	64
80*20 3*3/4	88.9*26.9 3.5*1.05	2.07 300	64	64
80*25 3*1	88.9*33.7 3.5*1.327	2.07 300	60	64
80*32 3*1 1/4	88.9*42.4 3.5*1.66	2.07 300	60	64
80*40 3*1 1/2	88.9*48.3 3.5*1.9	2.07 300	60	64
80*50 3*2	88.9*60.3 3.5*2.375	2.07 300	60	64
80*65 3*2 1/2	88.9*73 3.5*2.875	2.07 300	60	64
80*65 3*2 1/2	88.9*76.1 3.5*3	2.07 300	60	64
100*25 4*1	108*33.7 4.252*1.327	2.07 300	65	76
100*32 4*1 1/4	108*42.4 4.252*1.66	2.07 300	65	76
100*40 4*1 1/2	108*48.3 4.252*1.9	2.07 300	65	76
100*50 4*2	108*60.3 4.252*2.375	2.07 300	65	76

Nominal size	Pipe O.D mm/in	Working Pressure Mpa/psi	Dimension mm/in	
规格	钢管尺寸	工作压力	L	
100*65 4*2 1/2	108*73 4.252*2.875	2.07 300	65	76
100*65 4*2 1/2	108*76.1 4.252*3	2.07 300	65	76
100*80 4*3	108*88.9 4.252*3.5	2.07 300	65	76
100*15 4*1/2	114.3*21.3 4.5*0.825	2.07 300	65	76
100*20 4*3/4	114.3*26.7 4.5*1.05	2.07 300	65	76
100*25 4*1	114.3*33.7 4.5*1.327	2.07 300	65	76
100*32 4*1 1/4	114.3*42.4 4.5*1.66	2.07 300	65	76
100*40 4*1 1/2	114.3*48.3 4.5*1.9	2.07 300	65	76
100*50 4*2	114.3*60.3 4.5*2.375	2.07 300	65	76
100*65 4*2 1/2	114.3*73 4.5*2.875	2.07 300	65	76
100*65 4*2 3/4	114.3*76.1 4.5*3	2.07 300	65	76
100*80 4*3	114.3*88.9 4.5*3.5	2.07 300	65	76
125*25 5*1	133*33.7 5.25*1.327	2.07 300	70	89
125*32 5*1 1/4	133*42.4 5.25*1.66	2.07 300	70	89
125*40 5*1 1/2	133*48.3 5.25*1.9	2.07 300	70	89
125*50 5*2	133*60.3 5.25*2.375	2.07 300	70	89
125*65 5*2 1/2	133*73 5.25*2.875	2.07 300	70	89
125*65 5*2 3/4	133*76.1 5.25*3	2.07 300	70	89
125*80 5*3	133*88.9 5.25*3.5	2.07 300	70	89
125*100 5*4	133*114.3 5.25*4.5	2.07 300	65	89
125*15 5*1/2	139.7*21.3 5.5*0.825	2.07 300	70	89
125*20 5*3/4	139.7*26.7 5.5*1.05	2.07 300	70	89
125*25 5*1	139.7*33.7 5.5*1.327	2.07 300	70	89
125*32 5*1 1/4	139.7*42.4 5.5*1.66	2.07 300	70	89
125*40 5*1 1/2	139.7*48.3 5.5*1.9	2.07 300	70	89
125*50 5*2	139.7*60.3 5.5*2.375	2.07 300	70	89
125*65 5*2 1/2	139.7*73 5.5*2.875	2.07 300	70	89
125*65 5*2 3/4	139.7*76.1 5.5*3	2.07 300	70	89
125*80 5*3	139.7*88.9 5.5*3.5	2.07 300	70	89
125*100 5*4	139.7*114.3 5.5*4.5	2.07 300	70	89
125*15 5*1/2	139.7*21.3 5.5*0.825	2.07 300	70	89
125*20 5*3/4	139.7*26.7 5.5*1.05	2.07 300	70	89

**XGQT07S**

螺纹同心异径管

Threaded Concentric Reducer



BSPT and NPT threads are also available, please specify when order.

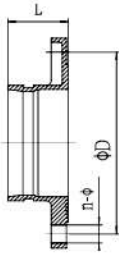
Nominal size	Pipe O.D mm/in	Working Pressure Mpa/psi	Dimension mm/in	
			L	
125*25 5*1	141.3*33.7 5.563*1.327	2.07 300	70	89
125*32 5*1 1/2	141.3*42.4 5.563*1.66	2.07 300	70	89
125*40 5*1 1/2	141.3*48.3 5.563*1.9	2.07 300	70	89
125*50 5*2	141.3*60.3 5.563*2.375	2.07 300	70	89
125*65 5*2 1/2	141.3*73 5.563*2.875	2.07 300	70	89
125*65 5*2 1/2	141.3*76.1 5.563*3	2.07 300	70	89
125*80 5*3	141.3*88.9 5.563*3.5	2.07 300	70	89
125*100 5*4	141.3*114.3 5.563*4.5	2.07 300	70	89
150*25 6*1	159*33.7 6.25*1.327	2.07 300	75	102
150*32 6*1 1/2	159*42.4 6.25*1.66	2.07 300	75	102
150*40 6*1 1/2	159*48.3 6.25*1.9	2.07 300	75	102
150*50 6*2	159*60.3 6.25*2.375	2.07 300	75	102
150*65 6*2 1/2	159*73 6.25*2.875	2.07 300	75	102
150*65 6*2 1/2	159*76.1 6.25*3	2.07 300	75	102
150*80 6*3	159*88.9 6.25*3.5	2.07 300	75	102
150*100 6*4	159*114.3 6.25*4.5	2.07 300	75	102
150*15 6* 1/2	165.1*21.3 6.5*0.825	2.07 300	75	102
150*20 6* 1/2	165.1*26.7 6.5*1.05	2.07 300	75	102
150*25 6*1	165.1*33.7 6.5*1.327	2.07 300	75	102
150*32 6*1 1/2	165.1*42.4 6.5*1.66	2.07 300	75	102
150*40 6*1 1/2	165.1*48.3 6.5*1.9	2.07 300	75	102
150*50 6*2	165.1*60.3 6.5*2.375	2.07 300	75	102
150*65 6*2 1/2	165.1*73 6.5*2.875	2.07 300	75	102
150*65 6*2 1/2	165.1*76.1 6.5*3	2.07 300	75	102
150*80 6*3	165.1*88.9 6.5*3.5	2.07 300	75	102
150*100 6*4	165.1*114.3 6.5*4.5	2.07 300	75	102
150*15 6* 1/2	168.3*21.3 6.625*0.825	2.07 300	75	102
150*20 6* 1/2	168.3*26.7 6.625*1.05	2.07 300	75	102
150*25 6*1	168.3*33.7 6.625*1.327	2.07 300	75	102
150*32 6*1 1/2	168.3*42.4 6.625*1.66	2.07 300	75	102
150*40 6*1 1/2	168.3*48.3 6.625*1.9	2.07 300	75	102
150*50 6*2	168.3*60.3 6.625*2.375	2.07 300	75	102

Nominal size	Pipe O.D mm/in	Working Pressure Mpa/psi	Dimension mm/in	
			L	
150*65 6*2 1/2	168.3*73 6.625*2.875	2.07 300	75	102
150*65 6*2 1/2	168.3*76.1 6.625*3	2.07 300	75	102
150*80 6*3	168.3*88.9 6.625*3.5	2.07 300	75	102
150*100 6*4	168.3*114.3 6.625*4.5	2.07 300	75	102
200*100 8*4	216.3*114.3 8.516*4.5	2.07 300	85	127
200*50 8*2	219.1*60.3 8.625*2.375	2.07 300	85	127
200*65 8*2 1/2	219.1*73 8.625*2.875	2.07 300	85	127
200*65 8*2 1/2	219.1*76.1 8.625*3	2.07 300	85	127
200*80 8*3	219.1*88.9 8.625*3.5	2.07 300	85	127
200*100 8*4	219.1*114.3 8.625*4.5	2.07 300	85	127
250*100 10*4	273*114.3 10.75*4.5	2.07 300	90	172
300*100 12*4	323.9*114.3 12.75*4.5	2.07 300	90	178

### XGQT08

转换法兰

Grooved Adaptor Flange

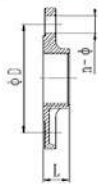


Nominal size	Pipe O.D mm/in	Dimension mm/in	PN10		PN16		PN25		ANSI 150		10K		20K		BS	
			D	Bolt size	D	Bolt size	D	Bolt size	D	Bolt size	D	Bolt size	D	Bolt size	D	Bolt size
规格	钢管尺寸	L		螺栓规格		螺栓规格		螺栓规格		螺栓规格		螺栓规格		螺栓规格		螺栓规格
25 1	33.7 1.327	60	85	4-M12	85	4-M12	85	4-M12	79.5	4-1/2						
32 1 1/4	42.4 1.66	60	100	4-M16	100	4-M16	100	4-M16	89	4-1/2						
40 1 1/2	48.3 1.9	60	110	4-M16	110	4-M16	110	4-M16	98.5	4-1/2	105	4-5/8	105	4-5/8		
50 2	60.3 2.375	65	125	4-M16	125	4-M16	125	4-M16	120.5	4-5/8	120	4-5/8	120	8-5/8		
65 2 1/2	73 2.875	60	145	4-M16	145	4-M16	145	8-M16	139.5	4-5/8						
65 2 1/2	76.1 3	65	145	4-M16	145	4-M16	145	8-M16	139.5	4-5/8	140	4-5/8	140	8-5/8	127	4-M16
80 3	88.9 3.5	65	160	8-M16	160	8-M16	160	8-M16	152.5	8-5/8	150	8-5/8	160	8-3/4	146	4-M16
100 4	108 4.252	65	180	8-M16	180	8-M16	190	8-M20								
100 4	114.3 4.5	70	180	8-M16	180	8-M16	190	8-M20	190.5	8-5/8	175	8-5/8	185	8-3/4	178	8-M16
125 5	133 5.25	70	210	8-M16	210	8-M16	220	8-M24								
125 5	139.7 5.5	70	210	8-M16	210	8-M16	220	8-M24	216	8-3/4	210	8-3/4	225	8-7/8	210	8-M16
125 5	141.3 5.563	70	210	8-M16	210	8-M16			216	8-3/4						
150 6	159 6.26	70	240	8-M20	240	8-M20	250	8-M24								
150 6	165.1 6.5	70	240	8-M20	240	8-M20	250	8-M24	241.5	8-3/4	240	8-3/4	260	12-7/8	235	8-M20
150 6	168.3 6.625	70	240	8-M20	240	8-M20			241.5	8-3/4						
200 8	216.3 8.516	80									290	12-3/4	305	12-7/8		
200 8	219.1 8.625	80	295	8-M20	295	12-M20	310	12-M24	298.5	8-3/4					292	8-M20
250 10	267.4 10.528	85									355	12-7/8	380	12-1		
250 10	273 10.75	85	350	12-M20	355	12-M20			362	12-7/8					356	12-M20
300 12	318.5 12.539	90									400	12-7/8	430	16-1		
300 12	323.9 12.75	90	400	12-M20	410	12-M20			432	12-7/8					406	12-M22
350 14	355.6 12.750	100							476	12-1					470	12-M22
350 14	377.0 14.843	100			470	16-M20										
400 16	406.4 16.000	110							540	16-1					521	12-M22
400 16	426.0 16.772	110			525	16-M24										
450 18	457.2 18.000	115							578	16-11/8					584	16-M22
450 18	480 18.897	115			585	20-M24										
500 20	508.0 20.000	152			650	20-M24			635	20-11/8						
600 24	609.6 24.000	152			770	20-M27			749.5	20-11/4						

### XGQT08S

丝接法兰

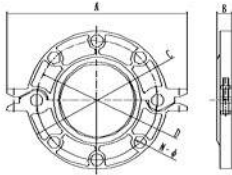
Threaded Flange



Nominal size	Pipe O.D mm/in	Dimension mm/in	PN10		PN16		PN25		ANSI 150		10K		20K		BS	
			D	Bolt size	D	Bolt size	D	Bolt size	D	Bolt size	D	Bolt size	D	Bolt size	D	Bolt size
规格	钢管尺寸	L		螺栓规格		螺栓规格		螺栓规格		螺栓规格		螺栓规格		螺栓规格		螺栓规格
25 1	33.7 1.327	30	85	4-M12	85	4-M12	85	4-M12	79.5	4-1/2						
32 1 1/4	42.4 1.66	30	100	4-M16	100	4-M16	100	4-M16	89	4-1/2						
40 1 1/2	48.3 1.9	30	110	4-M16	110	4-M16	110	4-M16	98.5	4-1/2	105	4-5/8	105	4-5/8		
50 2	60.3 2.375	30	125	4-M16	125	4-M16	125	4-M16	120.5	4-5/8	120	4-5/8	120	8-5/8		
65 2 1/2	73 2.875	35	145	4-M16	145	4-M16	145	8-M16	139.5	4-5/8						
65 2 1/2	76.1 3	35	145	4-M16	145	4-M16	145	8-M16	139.5	4-5/8	140	4-5/8	140	8-5/8	127	4-M16
80 3	88.9 3.5	35	160	8-M16	160	8-M16	160	8-M16	152.5	8-5/8	150	8-5/8	160	8-3/4	146	4-M16
100 4	114.3 4.5	40	180	8-M16	180	8-M16	190	8-M20	190.5	8-5/8	175	8-5/8	185	8-3/4	178	8-M16

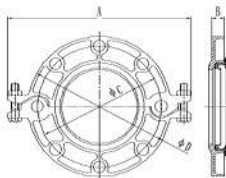


**XGQT4**  
分体法兰  
Grooved Split Flange  
PN16



Nominal size 规格	Pipe O.D mm/in 钢管尺寸	Dimension mm/in				Bolt Size 螺栓规格	
		A	B	C	D		
40 1½	48.3 1.900	195	18.5	110	150	2-M1050	4-M16
50 2	60.3 2.375	220	22	125	165	2-M1060	4-M16
65 2½	73 2.875	238	22	145	185	2-M1060	4-M16
65 2½	76.1 3	238	22	145	185	2-M1060	4-M16
80 3	88.9 3.5	252	22	160	200	2-M1060	8-M16
100 4	108 4.25	278	22	180	220	2-M1065	8-M16
100 4	114.3 4.5	278	22	180	220	2-M1065	8-M16
125 5	133 5.25	318	23	210	250	2-M1065	8-M16
125 5	139.7 5.5	318	23	210	250	2-M1065	8-M16
125 5	141.3 5.563	318	23	210	250	2-M1065	8-M16
150 6	159 6.25	345	23	240	285	2-M10*6	8-M20
150 6	165.1 6.5	345	23	240	285	2-M10*6	8-M20
150 6	168.3 6.625	345	23	240	285	2-M10*6	8-M20
200 8	216.3 8.516	402	28	295	335	2-M1280	12-M20
200 8	219.1 8.625	410	28	295	340	2-M12*80	12-M20
250 10	267.4 10.528	496	29.5	355	400	2-M12*80	12-M24
250 10	273 10.75	500	29.5	355	405	2-M12*80	12-M24
300 12	318.5 12.539	545	29.5	410	452	2-M12*80	12-M24
300 12	323.9 12.75	550	29.5	410	460	2-M12*80	12-M24

**XGQT4**  
ANSI 150  
分体法兰  
Grooved Split Flange

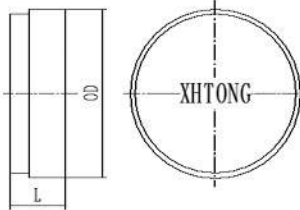


Nominal size 规格	Pipe O.D mm/in 钢管尺寸	Dimension mm/in				Bolt Size 螺栓规格	
		A	B	C	D		
50 2	60.3 2.375	220	22	120.5	155	2-M10*60	4-5/8
65 2½	73 2.875	238	22	139.5	180	2-M10*60	4-5/8
65 2½	76.1 3	238	22	139.5	190	2-M10*60	4-5/8
80 3	88.9 3.5	252	22	152.5	190	2-M10*60	4-5/8
100 4	114.3 4.5	278	22	190.5	230	2-M10*65	4-5/8
125 5	141.3 5.563	318	23	216	255	2-M10*65	8-3/4
150 6	165.1 6.5	345	23	241.5	280	2-M10*65	8-3/4
150 6	168.3 6.625	345	23	241.5	280	2-M10*65	8-3/4
200 8	219.1 8.625	410	28	298.5	345	2-M12*80	8-3/4
250 10	273 10.75	500	29.5	362	405	2-M12*80	12-7/8
300 12	323.9 12.75	550	29.5	432	485	2-M12*80	12-7/8

**XGQT09**

盲片

Cap



Nominal size	Pipe O.D mm/in	Working Pressure Mpa/psi	Dimension mm/in
规格	钢管尺寸	工作压力	L
25	33.7	2.07	25
1	1.315	300	
32	42.4	2.07	25
1¼	1.66	300	
40	48.3	2.07	25
1½	1.9	300	
50	60.3	2.07	25
2	2.375	300	
65	73	2.07	25
2½	2.875	300	
65	76.1	2.07	25
2½	3	300	
80	88.9	2.07	25
3	3.5	300	
100	108	2.07	28
4	4.252	300	
100	114.3	2.07	28
4	4.5	300	
125	133	2.07	28
5	5.25	300	
125	139.7	2.07	28
5	5.5	300	
125	141.3	2.07	28
5	5.563	300	
150	159	2.07	28
6	6.26	300	
150	165.1	2.07	28
6	6.5	300	
150	168.3	2.07	28
6	6.625	300	
200	216.3	2.07	32
8	8.516	300	
200	219.1	2.07	32
8	8.625	300	
250	267.4	2.07	34
10	10.528	300	
250	273	2.07	34
10	10.75	300	
300	318.5	2.07	34
12	12.539	300	
300	323.9	2.07	34
12	12.75	300	
350	355.6	2.07	102
14	14.000	300	
350	377.0	2.07	102
14	14.84	300	
400	406.4	2.07	102
16	16.000	300	
400	426.0	2.07	102
16	16.77	300	
450	457.2	2.07	127
18	18.000	300	
450	480.0	2.07	127
18	18.90	300	
500	508.0	2.07	152
20	20.000	300	
600	609.6	2.07	152
24	24.000	300	
600	630	2.07	152
24	24.80	300	

### XGQT10

偏心带孔盲片

End Cap  
with Eccentric Hole



Nominal size	Pipe O.D mm/in	Working Pressure Mpa/psi	Dimension mm/in	Nominal size	Pipe O.D mm/in	Working Pressure Mpa/psi	Dimension mm/in
规格	钢管尺寸	工作压力	L	规格	钢管尺寸	工作压力	L
50X25 2X1	60.3 X33.7 2.375X1.315	2.07 300	25	125X32 5X1/4	141.3X42.4 5.563X1.66	2.07 300	28
50X32 2X1 1/4	60.3 X 42.4 2.375X 1.66	2.07 300	25	125X40 5X1 1/2	141.3 X 48.3 5.563X1.9	2.07 300	28
50X40 2X1 1/2	60.3 X 48.3 2.375X 1.9	2.07 300	25	125X50 5X2	141.3 X 60.3 5.563X2.375	2.07 300	28
65X25 2 1/2 X1	73X33.7 2.875X1.315	2.07 300	25	150X25 6X1	165.1 X 33.7 6.5X1.315	2.07 300	28
50X32 2 1/2 X 1 1/4	73X42.4 2.875X1.66	2.07 300	25	150X32 6X1 1/4	165.1 X 42.4 6.5X1.66	2.07 300	28
65X40 2 1/2 X 1 1/2	73X48.3 2.875X1.9	2.07 300	25	150X40 6X1 1/2	165.1 X 48.3 6.5X1.9	2.07 300	28
65X25 2 1/2 X1	76.1X33.7 3X1.315	2.07 300	25	150X50 6X2	165.1 X 60.3 5.5X2.375	2.07 300	28
50X32 2 1/2 X 1 1/4	76.1 X 42.4 3X1.66	2.07 300	25	150X25 6X1	168.3 X 33.7 6.625X1.315	2.07 300	28
65X40 2 1/2 X 1 1/2	76.1 X 48.3 3X1.9	2.07 300	25	150X32 6X1 1/4	168.3 X 42.4 6.625X1.66	2.07 300	28
65X50 2 1/2 X 2	76.1X60.3 3X2.375	2.07 300	25	150X40 6X1 1/2	168.3 X 48.3 6.625X1.9	2.07 300	28
80X25 3X1	88.9 X33.7 3.5X1.315	2.07 300	25	150X50 6X2	168.3 X 60.3 6.625X2.375	2.07 300	28
80X32 3X1 1/4	88.9 X 42.4 3.5X1.66	2.07 300	25	200X25 8X1	219.1 X 33.7 8.625X1.315	2.07 300	32
80X40 3X1 1/2	88.9 X 48.3 3.5X1.9	2.07 300	25	200X32 8X1 1/4	219.1 X 42.4 8.625X1.66	2.07 300	32
80X50 3X2	88.9 X 60.3 3.5X2.375	2.07 300	25	200X40 8X1 1/2	219.1 X 48.3 8.625X1.9	2.07 300	32
100X25 4X1	114.3 X33.7 4.5X1.315	2.07 300	28	200X50 8X2	219.1 X 60.3 8.625X2.375	2.07 300	32
100X32 4X1 1/4	114.3 X 42.4 4.5X1.66	2.07 300	28	250X25 10X1	273X33.7 10.75X1.315	2.07 300	34
100X40 4X1 1/2	114.3 X 48.3 4.5X1.9	2.07 300	28	250X25 10X1 1/4	273X42.4 10.75X1.66	2.07 300	34
100X50 4X2	114.3 X 60.3 4.5X2.375	2.07 300	28	250X25 10X1 1/2	273X48.3 10.75X1.9	2.07 300	34
125X25 5X1	139.7X33.7 5.5X1.315	2.07 300	28	250X25 10X2	273X60.3 10.75X2.375	2.07 300	34
125*32 5X1 1/4	139.7X42.4 5.5X1.66	2.07 300	28	300X25 12X1	323.9X33.7 12.75X1.315	2.07 300	34
125X40 5X1 1/2	139.7 X 48.3 5.5X1.9	2.07 300	28	300X32 12X1 1/4	323.9X42.4 12.75 X1.66	2.07 300	34
125X50 5X2	139.7 X 60.3 5.5X2.375	2.07 300	28	300X40 12X1 1/2	323.9X48.3 12.75 X1.9	2.07 300	34
125X25 5X1	141.3X33.7 5.563X1.315	2.07 300	28	300X50 12X2	323.9X60.3 12.75 X2.375	2.07 300	34

**XGQT10C**

同心带孔盲片

End Cap  
with Concentric Hole



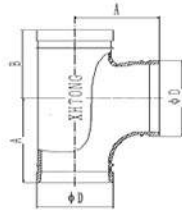
Nominal size	Pipe O.D mm/in	Working Pressure Mpa/psi	Dimension mm/in	Nominal size	Pipe O.D mm/in	Working Pressure Mpa/psi	Dimension mm/in
规格	钢管尺寸	工作压力	L	规格	钢管尺寸	工作压力	L
50X25 2X1	60.3 X33.7 2.375X1.315	2.07 300	25	125X32 5X1 1/4	141.3X42.4 5.563X1.66	2.07 300	28
50X32 2X1 1/4	60.3 X 42.4 2.375X 1.66	2.07 300	25	125X40 5X1 1/2	141.3 X 48.3 5.563X1.9	2.07 300	28
50X40 2X1 1/2	60.3 X 48.3 2.375X 1.9	2.07 300	25	125X50 5X2	141.3 X 60.3 5.563X2.375	2.07 300	28
65X25 2 1/2 X1	73X33.7 2.875X1.315	2.07 300	25	150X25 6X1	165.1 X 33.7 6.5X1.315	2.07 300	28
50X32 2 1/2 X 1 1/4	73X42.4 2.875X1.66	2.07 300	25	150X32 6X1 1/4	165.1 X 42.4 6.5X1.66	2.07 300	28
65X40 2 1/2 X 1 1/2	73X48.3 2.875X1.9	2.07 300	25	150X40 6X1 1/2	165.1 X 48.3 6.5X1.9	2.07 300	28
65X25 2 1/2 X1	76.1X33.7 3X1.315	2.07 300	25	150X50 6X2	165.1 X 60.3 5.5X2.375	2.07 300	28
50X32 2 1/2 X 1 1/4	76.1 X 42.4 3X1.66	2.07 300	25	150X25 6X1	168.3 X 33.7 6.625X1.315	2.07 300	28
65X40 2 1/2 X 1 1/2	76.1 X 48.3 3X1.9	2.07 300	25	150X32 6X1 1/4	168.3 X 42.4 6.625X1.66	2.07 300	28
65X50 2 1/2 X 2	76.1X60.3 3X2.375	2.07 300	25	150X40 6X1 1/2	168.3 X 48.3 6.625X1.9	2.07 300	28
80X25 3X1	88.9 X33.7 3.5X1.315	2.07 300	25	150X50 6X2	168.3 X 60.3 6.625X2.375	2.07 300	28
80X32 3X1 1/4	88.9 X 42.4 3.5X1.66	2.07 300	25	200X25 8X1	219.1 X 33.7 8.625X1.315	2.07 300	32
80X40 3X1 1/2	88.9 X 48.3 3.5X1.9	2.07 300	25	200X32 8X1 1/4	219.1 X 42.4 8.625X1.66	2.07 300	32
80X50 3X2	88.9 X 60.3 3.5X2.375	2.07 300	25	200X40 8X1 1/2	219.1 X 48.3 8.625X1.9	2.07 300	32
100X25 4X1	114.3 X33.7 4.5X1.315	2.07 300	28	200X50 8X2	219.1 X 60.3 8.625X2.375	2.07 300	32
100X32 4X1 1/4	114.3 X 42.4 4.5X1.66	2.07 300	28	250X25 10X1	273X33.7 10.75X1.315	2.07 300	34
100X40 4X1 1/2	114.3 X 48.3 4.5X1.9	2.07 300	28	250X25 10X1 1/4	273X42.4 10.75X1.66	2.07 300	34
100X50 4X2	114.3 X 60.3 4.5X2.375	2.07 300	28	250X25 10X1 1/2	273X48.3 10.75X1.9	2.07 300	34
125X25 5X1	139.7X33.7 5.5X1.315	2.07 300	28	250X25 10X2	273X60.3 10.75X2.375	2.07 300	34
125X32 5X1 1/4	139.7X42.4 5.5X1.66	2.07 300	28	300X25 12X1	323.9 X33.7 12.75X1.315	2.07 300	34
125X40 5X1 1/2	139.7 X 48.3 5.5X1.9	2.07 300	28	300X32 12X1 1/4	323.9 X42.4 12.75X1.66	2.07 300	34
125X50 5X2	139.7 X 60.3 5.5X2.375	2.07 300	28	300X40 12X1 1/2	323.9 X48.3 12.75 X1.9	2.07 300	34
125X25 5X1	141.3X33.7 5.563X1.315	2.07 300	28	300X50 12X2	323.9 X60.3 12.75X2.375	2.07 300	34

**Y03**  
正Y型三通  
Ture-Y



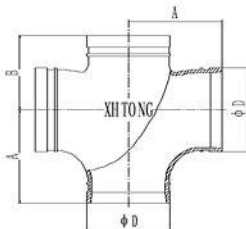
Nominal size 规格	Pipe O.D mm/in	Working Pressure Mpa/psi	Dimension mm/in	
			L1	L2
50 2	60.3 2.375	2.07 300	70	83
65 2½	73 2.875	2.07 300	76	95
65 2½	76.1 3	2.07 300	76	95
80 3	88.9 3.5	2.07 300	83	108
100 4	114.3 4.5	2.5 300	95	127
125 5	139.7 5.5	2.07 300	102	140
125 5	141.3 5.563	2.07 300	102	140
150 6	165.1 6.5	2.5 300	114	165
150 6	168.3 6.625	2.5 300	114	165
200 8	219.1 8.625	2.5 300	152	197
250 10	273 10.75	2.5 300	165	229
300 12	323.9 12.75	2.5 300	178	254

**TY03**  
沟槽顺水三通  
Pitcher Tee



Nominal size 规格	Pipe O.D mm/in	Working Pressure Mpa/psi	Dimension mm/in	
			A	B
100 4	114.3 4.5	2.5 300	127	102
150 6	165.1 6.5	2.5 300	165	140
150 6	168.3 6.625	2.5 300	165	140
200 8	219.1 8.625	2.5 300	197	175
250 10	273 10.75	2.5 300	229	215
300 12	323.9 12.75	2.5 300	266	245

**TY04**  
沟槽顺水四通  
Pitcher Cross

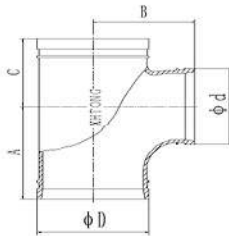


Nominal size 规格	Pipe O.D mm/in	Working Pressure Mpa/psi	Dimension mm/in	
			A	B
100 4	114.3 4.5	2.5 300	127	102
150 6	165.1 6.5	2.5 300	165	140
150 6	168.3 6.625	2.5 300	165	140
200 8	219.1 8.625	2.5 300	197	175
250 10	273 10.75	2.5 300	229	215
300 12	323.9 12.75	2.5 300	266	245

**TY05**

沟槽异径顺水三通

Reducing Pitcher Tee

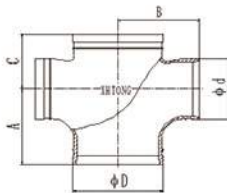


Nominal size 规格	Pipe O.D mm/in 钢管尺寸	Working Pressure Mpa/psi 工作压力	Dimension mm/in		
			A	B	C
150*80 6*3	168.3*88.9 6.625*3.5	2.07 300	110	146	96
150*100 6*4	168.3*114.3 6.625*4.5	2.07 300	140	153	102
200*80 8*3	219.1*88.9 8.625*3.5	2.07 300	110	175	96
200*100 8*4	219.1*114.3 8.625*4.5	2.07 300	140	188	114
250*100 10*4	273*114.3 10.75*4.5	2.07 300	140	220	114
250*200 10*8	273*219.1 10.75*8.625	2.07 300	215	230	185
300*80 12*3	323.9*88.9 12.75*3.5	2.07 300	122	246	96
300*100 12*4	323.9*114.3 12.75*4.5	2.07 300	140	246	114
300*150 12*6	323.9*165.1 12.75*6.5	2.07 300	175	246	144
300*150 12*6	323.9*168.3 12.75*6.625	2.07 300	175	246	144
300*200 12*8	323.9*219.1 12.75*8.625	2.07 300	215	266	185
300*250 12*10	323.9*273 12.75*10.75	2.07 300	245	260	215

**TY06**

沟槽异径顺水四通

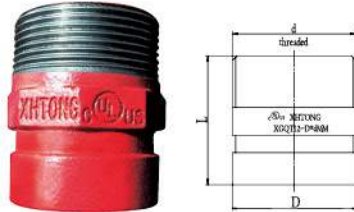
Reducing Pitcher Cross



Nominal size 规格	Pipe O.D mm/in 钢管尺寸	Working Pressure Mpa/psi 工作压力	Dimension mm/in		
			A	B	C
150*100 6*4	168.3*114.3 6.625*4.5	2.07 300	140	153	102
200*100 8*4	219.1*114.3 8.625*4.5	2.07 300	140	188	114
300*100 12*4	323.9*114.3 12.75*4.5	2.07 300	140	246	114
300*150 12*6	323.9*165.1 12.75*6.5	2.07 300	175	246	144
300*150 12*6	323.9*168.3 12.75*6.625	2.07 300	175	246	144
300*250 12*10	323.9*273 12.75*10.75	2.07 300	245	260	215

### XGQT12

外螺纹短接  
Nipple



BSPT and NPT threads are also available, please specify when order.

Nominal size	Pipe O.D mm/in	Working Pressure Mpa/psi	Dimension mm/in
规格	钢管尺寸	工作压力	L
32*32	42.4* 42.4	2.07	60
1 <sup>1</sup> / <sub>4</sub> *1 <sup>1</sup> / <sub>4</sub>	1.66*1.66	300	
40*40	48.3*48.3	2.07	60
1 <sup>1</sup> / <sub>2</sub> *1 <sup>1</sup> / <sub>2</sub>	1.9*1.9	300	
50*50	60.3*60.3	2.07	66
2*2	2.375*1.9	300	
65*65	76.1*76.1	2.07	75
2 <sup>1</sup> / <sub>2</sub> *2 <sup>1</sup> / <sub>2</sub>	3*1.327	300	
80*80	88.9*88.9	2.07	80
3*3	3.5*1.327	300	

### 橡胶密封圈 (GASKET DATA)

根据不同的环境和介质，选择不同的橡胶密封圈。



牌号标记 Gasket	名称 Name	适用温度 Temperature Range	使用介质 General Service Recommendations	颜色标记 Color Mark
E	三元乙丙橡胶 EPDM	-34~+110°C (-30~+230°F)	水、气体、稀释的酸(碱)、以及其他化学品(不包括碳氢化合物) 注: 严禁与油、碳氢化合物同用。 Water, air, dilute acids or base, and other chemicals(except hydrocarbon). Note: strictly prohibited usage with oil or hydrocarbon.	黑色加绿色标记 Green Strip
D	丁腈橡胶 NBR	-29~+82°C (-00~+180°F)	石油产品、植物油、矿物油 注: 严禁与高温物质同用。 (Recommended for petroleum products,air with oil vapors, vegetable and mineral oils within the specified temperature range. Not recommended for elevated temperature substances.)	黑色加橙色标记 Orange Strip
S	硅橡胶 Silicon Rubber	-40~+177°C (-40~+350°F)	高温干燥的空气和一些高温的化学物, 饮用水等。 (Recommended for high temperature dry air and some high temperature chemical products.)	白色 White

## 1 美制重型螺母

1. 材质：SAE J995 2.  
2. 螺纹：UNC 螺纹应符合 ANSI B 1.1-1982 统一螺纹，螺纹为 2B 级。

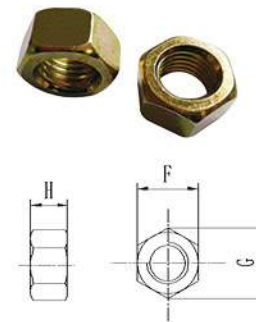
d	F		G		H	
	Min	Max	Min	Max	Min	Max
3/8-16UNC	16.99	17.47	19.38	20.17	8.66	9.57
1/2-13UNC	21.59	22.22	24.61	25.65	11.78	12.80
5/8-11UNC	26.19	26.97	29.85	31.16	14.90	16.02
3/4-10UNC	30.78	31.75	35.10	35.65	18.03	19.25
7/8-9UNC	35.41	36.53	40.36	42.16	21.16	22.48



## 2 公制重型螺母

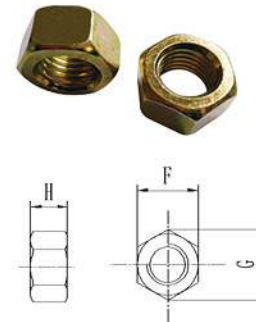
1. 材质：ISO 898-2:1992\GB/T3098.2-2000 Class 8.  
2. 螺纹：M 螺纹应符合 ISO 261 粗牙普通螺纹，螺纹公差 M10、M12 为 6h, M16 以上为 7h。

d	F		G	H	
	Min	Max	Min	Min	Max
M10	18.13	19	21.5	8.5	9.5
M12	20.16	21	22.78	11.9	12.3
M14	23.16	24	26.17	13.6	14.3
M16	26.16	27	29.56	16.4	17.1
M20	33	34	37.29	19.4	20.7
M22	22.3	23.6	39.55	22.3	23.6



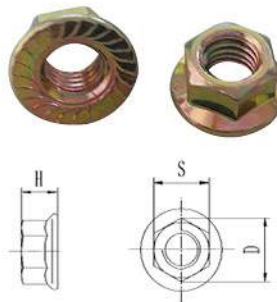
## 3 公制螺母

d	F		G	H	
	Min	Max	Min	Min	Max
M10	15.73	16	17.77	8.04	8.4
M12	17.73	18	20.03	10.97	10.8
M14	20.67	21	23.36	12.1	12.8
M16	23.67	24	26.75	14.1	16.8
M20	29.16	30	32.95	16.9	18
M22	33	34	37.29	18.1	19.4



## 4 六角法兰面螺母

d	S		D	h	
	Min	Max	Max	Min	Max
M10	14.73	15.00	21.80	9.64	10.00
M12	17.73	18.00	26.00	11.57	12.00
M14	20.67	21.00	28.50	13.30	14.00
M16	23.67	24.00	33.00	15.30	16.00

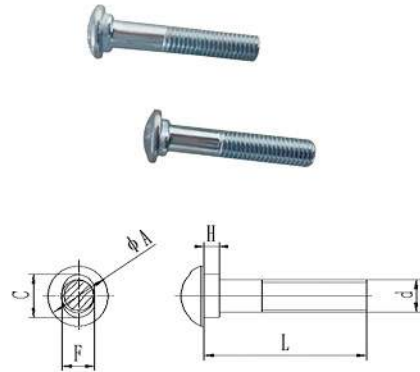




### 1 美制椭圆径螺栓

1. 材质：SAE J429 5.
2. 螺纹：UNC 螺纹的螺性符合 ANSI B 1.1 统一螺纹，螺纹为 2A 级。

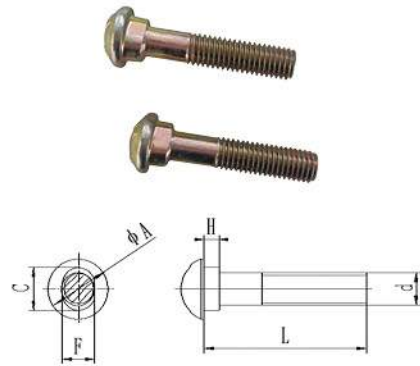
d	A	C	F	H	L
3/8-16UNC	19	13.9	9.50	6.0	55/70
1/2-13UNC	22.5	16	12.70	8.0	70/75
5/8-11UCN	27.4	19.8	15.90	10.0	80/85/105
3/4-10UNC	32.5	26.2	19.05	12.0	115/120
7/8-9UNC	37.7	28.8	22.20	14.0	125/140



### 2 公制椭圆径螺栓

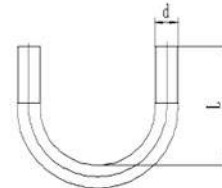
1. 材质：M 螺纹的螺性符合外螺纹紧固件的机械性能和材料要求 GB/T3098.1-2000 (ISO 898-1:1992) 8.8 级。
2. 螺纹：M 螺纹应符合 ISO 261 粗牙普通螺纹，螺纹公差 6h。

d	A	C	F	H	L
M10	18.5	13.5	9.5	5	45/50/55/60
M12	23.5	17.5	12.3	8	60/65/70/75/80
M14	24	18	14	9.5	75/85/90
M16	29.5	20.5	15.7	10	85/90/100/120
M20	38	27	18.3	12.5	100/110/120/130
M22	42.2	31	21.4	14	90/110/120/130

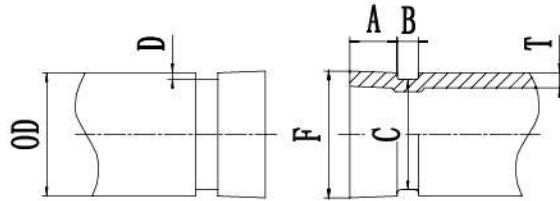


### 3 U 型螺栓 U-Bolt

d	L				
M10	52	54	65	75	92



## 轧制沟槽尺寸标准



管道公称直径 DN	管道外径 OD			管端至沟槽边尺寸 A ± 0.76	沟槽宽度 B ± 0.76	沟槽直径 C		沟槽深度 D	管壁最小壁厚 T	最大伸展面外径 F
	实际尺寸	公差				实际尺寸	公差			
25	33.7	+0.41	-0.68	15.88	7.14	30.23	-0.38	1.60	1.8	34.5
32	42.4	+0.50	-0.60	15.88	7.14	38.99	-0.38	1.60	1.8	43.3
40	48.3	+0.44	-0.52	15.88	7.14	45.09	-0.38	1.60	1.8	49.4
50	60.3	+0.61	-0.61	15.88	8.74	57.15	-0.38	1.60	1.8	62.2
65	73.0	+0.74	-0.74	15.88	8.74	69.09	-0.46	1.98	2.3	75.2
65	76.1	+0.76	-0.76	15.88	8.74	72.26	-0.46	1.98	2.3	77.7
80	88.9	+0.89	-0.79	15.88	8.74	84.94	-0.46	1.98	2.3	90.6
90	101.6	+1.02	-0.79	15.88	8.74	97.38	-0.51	2.11	2.3	103.4
100	108.0	+1.07	-0.79	15.88	8.74	103.73	-0.51	2.11	2.3	109.7
100	114.3	+1.14	-0.79	15.88	8.74	110.08	-0.51	2.11	2.3	116.2
125	133.0	+1.32	-0.79	15.88	8.74	129.13	-0.51	2.11	2.9	134.9
125	139.7	+1.40	-0.79	15.88	8.74	135.48	-0.51	2.11	2.9	141.7
125	141.3	+1.42	-0.79	15.88	8.74	137.03	-0.56	2.13	2.9	143.5
150	159.0	+1.60	-0.79	15.88	8.74	154.50	-0.56	2.16	2.9	161.0
150	165.1	+1.60	-0.79	15.88	8.74	160.90	-0.56	2.16	2.9	167.1
150	168.3	+1.60	-0.79	15.88	8.74	163.96	-0.56	2.16	2.9	170.7
200	219.1	+1.60	-0.79	19.05	11.91	214.40	-0.64	2.34	2.9	221.5
250	273.0	+1.60	-0.79	19.05	11.91	268.28	-0.69	2.39	3.6	275.4
300	323.9	+1.60	-0.79	19.05	11.91	318.29	-0.76	2.77	4.0	326.2
350	355.6	+1.60	-0.79	23.8	12.7	350.0	-0.76	2.77	4.0	358.1
350	377.0	+1.60	-0.79	23.8	12.7	371.1	-0.76	2.77	4.0	379.5
400	406.4	+1.60	-0.79	23.8	12.7	400.8	-0.76	2.77	4.2	408.9
400	426.0	+1.60	-0.79	23.8	12.7	419.5	-0.76	2.77	4.2	428.5
450	457.2	+1.60	-0.79	25.4	12.7	451.6	-0.76	2.77	4.5	461.3
450	480.0	+1.60	-0.79	25.4	12.7	474.2	-0.76	2.77	4.5	484.1
500	508.0	+1.60	-0.79	25.4	12.7	502.4	-0.76	2.77	4.8	512.1
500	530.0	+1.60	-0.79	25.4	12.7	524.2	-0.76	2.77	4.8	534.2
600	609.6	+1.60	-0.79	25.4	14.3	600.9	-0.76	4.37	6.0	614.7
600	630.0	+1.60	-0.79	25.4	14.3	620.2	-0.76	4.37	6.0	635.1

# Installation Instructions >

## Installation Instruction For Rigid & Flexible Coupling



### 1. Pipe preparation

管端至沟槽的管道外表面必须清洁光滑,无毛刺,无凹陷,凸起(包括焊缝),无脱落油漆和漆制压痕等,安装前必须检查,确保无上述影响橡胶圈密封的缺陷。

Before installation, please make sure the pipe outer surface from the end to the grooved shall be clean and smooth. No lumps and bumps, no paint particles, or other factors that will influence seal of gasket.



### 2. Lubricate gasket

检验橡胶圈,确保其适用于所有工况。在橡胶圈密封层及外表面涂一薄层合适的(润滑油),放置安装时橡胶圈。

Check gasket to make sure that its compatible for the intended service. Then, lubricate gasket.



### 3. Install gasket

将橡胶圈套入并定位到管端上,确保橡胶圈没有悬垂于管端。

Set and fix the gasket on the end of pipe.



### 4. Alignment

两个管端对中并接合到一起,让橡胶圈滑入就位,确保其定位于两管端沟槽之间的中间位置。同时确保橡胶圈无任何部位伸入任一管端的沟槽内。

Align the two pipes and slide the gasket to the groove. Please make sure the gasket does not slide into pipes.



### 5. House coupling

卸下管卡一端的螺栓螺母并松动另一侧的螺母。把一片管卡扣在橡胶圈上确保管卡两侧卡入两管端沟槽内,然后将另一片管卡扣在橡胶圈上,管卡两侧要卡入两管端沟槽内,然后用手把两片管卡对在一起。

Dismantle the bolt and nut of one side and loosen that of the other side. Then house one point coupling onto the gasket, and do the same to the other part. Firstly, align the two parts manually.



### 6. Tighten nuts

先动手拧紧螺母,然后用扭力扳手轮流并均匀地拧紧管卡两端的螺母,以达到(额定螺栓扭矩)且确保两螺栓的椭圆颈部完全落入螺栓孔内。

First tighten nuts manually, and then with a torque wrench. Try to make sure the two oval necks, completely inset into the bole holes.



### 7a. Assembly completed-Rigid Coupling

检验管道连接处,确保管卡两侧完全卡入管子沟槽中,两管卡对接处两侧的(间隙相等),且(看不到)橡胶圈。

Check the pipe connections, making sure the coupling totally clamped into the pipe grooves with the same seam in the pipe connection place and the gasket being invisible.

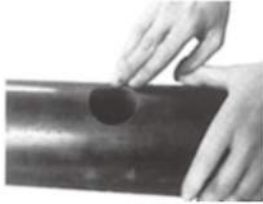


### 7. Assembly completed-Flexible Coupling

检验管道连接处,确保管卡两侧完全卡入管子沟槽中,两管卡对接处两侧均(无间隙)且看不到(挤橡胶圈)现象。

Check the pipe connections, making sure the coupling totally clamped into the pipe grooves with the same seam in the pipe connection place and the gasket being invisible.

Installation Instruction For Threaded & Grooved Mechanical Tee



1. Pipe preparation

开孔周边 16mm 范围内的管道必须清洁光滑,无毛刺,无凹陷、凸起,无脱落油漆,孔不得开在焊缝上。安装前必须检查,确保无上述影响橡胶圈密封的缺陷。

The pipe outer surface within 16mm around the hole shall be clean and smooth, burr-free, with no concave or convex (including weld), with no paint peeling or rolling indentations. The hole shall not be opened on weld. Inspection shall be performed prior to the installation, making sure there being no such defect which will affect the gasket seal.



2. Remove burrs

如管子开孔表面存在尖角或毛刺,安装前必须去除,防止安装过程中尖角或毛刺刺伤橡胶圈,影响密封性能,导致漏水。

Sharp points or burrs (if any) shall be removed before the installation, to avoid damage to gasket and poor seal, resulting in leakage.



3. Gasket installation

将橡胶垫的外圆弧表面放入机械三通橡胶槽区域内,对准孔慢慢地居中放入,保证定位环嵌入管子开孔中间位置,且使橡胶垫均匀的贴在孔的周边部位。

Place the gasket into the groove of mechanical tee with circular arc surface down, making sure the gasket properly positioned surround the hole.



4. Alignment

将下盖卡住管子,用手将主体与下盖对紧,先插入一侧螺栓并手动拧紧螺母后,再插入另一侧螺栓并手动拧紧螺母,仔细观察主体并把主体调至居中位置。

Clamp the housing onto the pipe and align the main part with the housing. Insert bolt into one side bolt hole and tighten nut manually and do the same to the other side. Check the main part and adjust it to the right place.



5. Tighten nuts

一只手扶住钢管,另一只手用扭力扳手拧紧螺母,根据规定的螺栓扭矩,轮流并均匀地拧紧螺母。

Hold the pipe with one hand, and tighten nuts uniformly with a torque wrench according to the rated bolt torque.



6. Assembly completed

检查管道连接处,下盖与主体之间应有间隙,且两侧间隙均匀。

Check the pipe connection, and make sure there being uniform gap between the main part and housing.

Caution

要达到额定性能,需要恰当的螺栓扭矩。螺栓扭矩过大会损坏铸件及螺栓(导致螺栓断裂),并致使连接脱落。螺栓扭矩过低会降低保压性能,减弱弯曲负荷能力,出现渗漏或导致连接脱落。一旦管子连接脱落,会造成重大的财产损失和严重的人身伤害!

To reach the rated performance, need proper bolt torque. Bolt torque over the damaged castings and bolt(bolt fracture, and the resulting loose connection. Bolt torque is too low will decrease the pressure maintaining performance, reduced bending load capacity, leakage or lead to loose connection. Once the pipe connection loss, can cause significant damage to property and serious personal injury!

额定螺栓扭矩 /Specified Bolt Torque	
螺栓尺寸 /Bolt Size	额定螺栓扭矩 /Specified Bolt Torque
Size	牛 * 米 /N.m
M10	40-60
M12	110-130
M14	120-140
M16	130-170
M20	180-220
M22	245-350

# Installation Instructions >

## Installation Instruction For Grooved Flange



### 1. Pipe preparation

管端至沟槽的管道外表面必须清洁光滑,无毛刺,无凹陷,凸起(包括焊缝),无脱落油漆和滚制压痕等。安装前必须检查,确保无上述影响橡胶圈密封的缺陷。

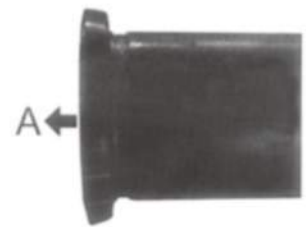
The pipe outer surface from the end to the groove shall be clean and smooth, burr-free, with no concave or convex (including weld), with no paint peeling or rolling indentations. Inspection shall be performed prior to the installation, making sure there being no such defect which will affect the gasket seal.



### 2. Lubricate gasket

检验橡胶圈,确保其适用于所有工况。在橡胶圈密封唇及外表面涂一薄层合适的润滑油,防止安装时挤橡胶圈。

Check gasket to make sure that it's compatible for the intended service. Apply a thin layer of lubricant to the gasket sealing lip and pipe outer surface, and avoid the extrusion of rubber ring when installing.



### 3. Lubricate gasket

将橡胶圈开口面朝A方向,缓慢套入并定位在钢管的管端处,确保橡胶圈的密封唇和管端平齐。

Slide the gasket on pipe to the end with the gasket opening facing the direction A, making sure that the gasket seal flush with the pipe end.



### 4. Housing installation

将法兰两侧螺栓拆下,卡入已安装好橡胶圈的钢管端部沟槽内,然后先后插入两侧螺栓,手动拧紧螺母。

Dismantle the bolts from the sides of flange housings. Clamp the housing into the groove installed with gasket, and insert the bolts and tighten nuts manually.



### 5. Tighten nuts

首先用梅花扳手套进螺栓底部六角处,方式螺栓转动,然后用扭力扳手轮流并均匀地拧紧两侧螺母,以达到额定螺栓扭矩。

Put the plum wrench around the hexagon point to avoid rotation of the bolt. Uniformly tighten nuts with a torque wrench to achieve the rated torque.



### 6. Connect mating flange

将法兰螺栓孔与相配套的阀门的法兰面上的螺栓孔对准。将标准法兰螺栓分别插入螺栓孔,以对角交替的方式均匀拧紧螺母,直达到标准法兰连接扭矩推荐值。安装完成。

Align the bolt holes of the flange with those of the valve flange surface. Insert standard flange bolts into the holes respectively, and tighten nuts uniformly in diagonal alternating manner, until reaching the recommended torque value for standard flange connection.

## Project References in Malaysia

ITEM	CLIENT	PROJECT TITLE	PRODUCTS
1	Kejuruteraan Astra Sdn Bhd	The Light City, Penang	Mech Coupling
2	Taehwa Engineering Sdn Bhd	Samsung Factory, Senawang	Mech Coupling



**INSAFOAM INSULATION (MALAYSIA) SDN. BHD.**

**Lot 11118, Kampung Sg. Rasau,  
Batu 8, Pulau Meranti,  
47100 Puchong,  
Selangor, Malaysia**

**Tel: (+603) 8060 9929**

**Fax: (+603) 8060 9841**

**Email: [insafoam@insafoam.com.my](mailto:insafoam@insafoam.com.my)**

**Website: [www.insafoam.com.my](http://www.insafoam.com.my)**